

June 2011 • Issue #408

# AMSTATNEWS

The Membership Magazine of the American Statistical Association • <http://magazine.amstat.org>

## Preparing for MIAMI

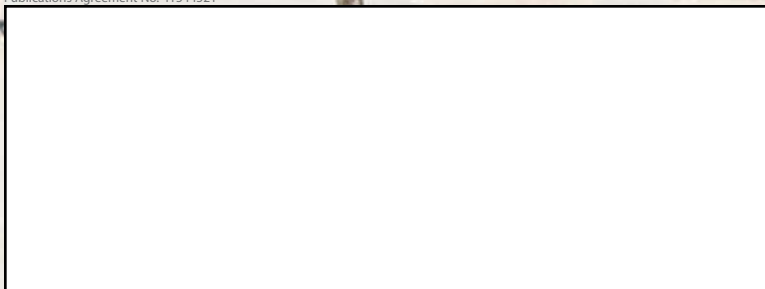
### **ALSO:**

Meet New NCES  
Commissioner  
Jack Buckley

Japanese Colleagues  
Share Quake Experiences

Statistical Agencies'  
FY11 Budgets Cut

Publications Agreement No. 41544521





# STATISTICA

**Version 10**  
Now Available

- ✓ Even more analytics & graphs
- ✓ Further UI optimizations
- ✓ Multiple CPU support

## Comprehensiveness

STATISTICA provides the widest selection of analytics including predictive data mining, modeling, classification, and exploratory techniques in one software platform.

## Graphical Data Analysis

The largest selection of graphs in one package, dynamic links between graphs and data, interactive brushing, graph templates for application to new data sets, automatic updating when the data change.

## Data Access

STATISTICA provides the most flexible tools for connecting directly to your data sources.

## Multi-User Solutions

STATISTICA provides the platform for data analysis and visualization for your department, site, or organization including both Windows client and interactive Web browser user interfaces.

## Report Templates

STATISTICA generates Reports in many formats including: PDF, MS Word, HTML, and RTF.

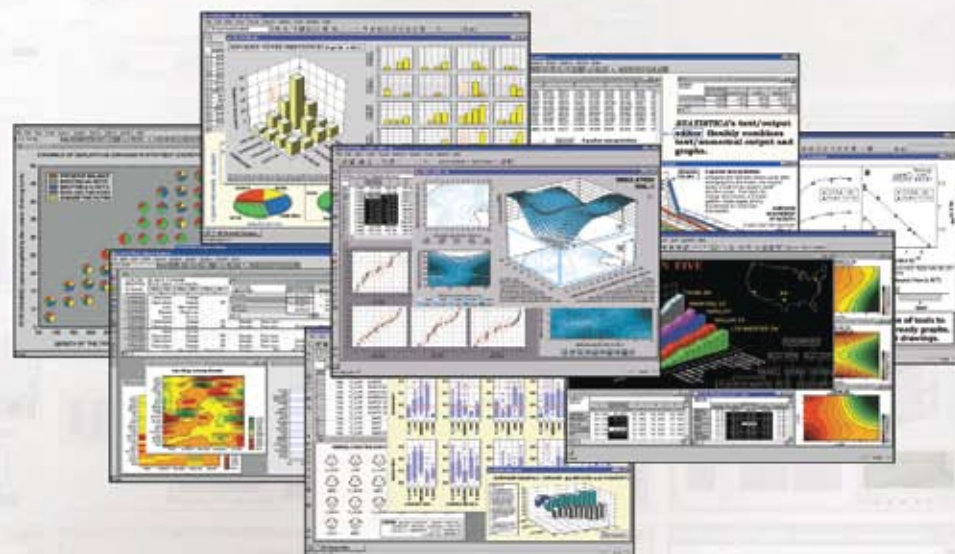
## Automation

Automate any set of analytic and graphical techniques using built-in Visual Basic. True open architecture with more than 14,000 externally callable functions.



## Integration

Run native R programs from inside STATISTICA. Exchange data and results easily with STATISTICA (Enterprise, Client-Server) solutions. Create and support validated (FDA) installations combining R and the STATISTICA Enterprise system for templated role-based enterprise-wide analytics. Use WebSTATISTICA client-server architecture to create powerful and secure remote R servers (multiple-CPU parallel processing).



## STATISTICA Provides a Wealth of Data Analysis, Data Mining, and Data Visualization Techniques, All in One Integrated, Fully Web-Enabled Platform

**Visualization:** Hundreds of 2D, 3D, and nD Graphs with built-in Analytics, Brushing, Slicing/Dicing, Subsets, Categorization, Links to Data, and much more...

**Exploration/Data Reduction:** Principal Components, Factor Analysis, Independent Components Analysis, Partial Least Squares, Feature Selection, and much more...

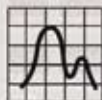
**Predictive Modeling and Classification:** General Linear Models, Generalized Linear/Nonlinear Models, Generalized Additive Models, Nonlinear Estimation, Curve Fitting, Classification and Regression Trees, CHAID, Survival Analysis, and much more...

**Advanced Data Mining Algorithms:** Boosted Trees, Random Forests, MARSplines, Advanced Neural Networks, Support Vector Machines, Naive Bayesian Classifiers, k-Nearest Neighbor methods (Memory-Based Learners), and much more...

**Clustering:** k-Means, EM, Hierarchical (Tree), Self Organizing Networks, and much more...

**QC/Process Improvement:** Real-Time and Predictive Quality Control Charts, Multivariate SPC, Design of Experiments (DOE), Process Capability, Weibull Analysis, Gage R&R, and much more...

[www.statsoft.com](http://www.statsoft.com)



**StatSoft®**

Fluoromagnesium system

2300 E. 14th St. • Tulsa, OK 74104 • USA • (918) 749-1119 • Fax: (918) 749-2217 • [info@statsoft.com](mailto:info@statsoft.com) • [www.statsoft.com](http://www.statsoft.com)

Australia: StatSoft Pacific Pty Ltd.  
Brazil: StatSoft Brazil Ltda.  
Bulgaria: StatSoft Bulgaria Ltd.  
Czech Republic: StatSoft Czech Rep. s.r.o.  
China: StatSoft China

France: StatSoft France  
Germany: StatSoft GmbH  
Hungary: StatSoft Hungary Ltd.  
India: StatSoft India Pvt. Ltd.  
Israel: StatSoft Israel Ltd.

Italy: StatSoft Italia srl  
Japan: StatSoft Japan Inc.  
Korea: StatSoft Korea  
Netherlands: StatSoft Benelux BV  
Norway: StatSoft Norway AS

Poland: StatSoft Polska Sp. z o.o.  
Portugal: StatSoft Iberica Ltda  
Russia: StatSoft Russia  
Spain: StatSoft Iberica Ltda

S. Africa: StatSoft S. Africa (Pty) Ltd.  
Sweden: StatSoft Scandinavia AB  
Taiwan: StatSoft Taiwan  
UK: StatSoft Ltd.

# AMSTATNEWS

JUNE 2011 • ISSUE #408

## Executive Director

Ron Wasserstein: [ron@amstat.org](mailto:ron@amstat.org)

## Associate Executive Director and Director of Operations

Stephen Porzio: [steve@amstat.org](mailto:steve@amstat.org)

## Director of Education

Martha Aliaga: [martha@amstat.org](mailto:martha@amstat.org)

## Director of Science Policy

Steve Pierson: [pierson@amstat.org](mailto:pierson@amstat.org)

## Managing Editor

Megan Murphy: [megan@amstat.org](mailto:megan@amstat.org)

## Production Coordinators/Graphic Designers

Melissa Muko: [melissa@amstat.org](mailto:melissa@amstat.org)

Kathryn Wright: [kathryn@amstat.org](mailto:kathryn@amstat.org)

## Publications Coordinator

Val Nirala: [val@amstat.org](mailto:val@amstat.org)

## Advertising Manager

Claudine Donovan: [claudine@amstat.org](mailto:claudine@amstat.org)

## Contributing Staff Members

Donna Arrington • Amy Farris • Eric Sampson

*Amstat News* welcomes news items and letters from readers on matters of interest to the association and the profession. Address correspondence to Managing Editor, *Amstat News*, American Statistical Association, 732 North Washington Street, Alexandria VA 22314-1943 USA, or email [amstat@amstat.org](mailto:amstat@amstat.org). Items must be received by the first day of the preceding month to ensure appearance in the next issue (for example, June 1 for the July issue). Material can be sent as a Microsoft Word document, PDF, or within an email. Articles will be edited for space. Accompanying artwork will be accepted in graphics file formats only (.jpg, etc.), minimum 300 dpi. No material in WordPerfect will be accepted.

*Amstat News* (ISSN 0163-9617) is published monthly by the American Statistical Association, 732 North Washington Street, Alexandria VA 22314-1943 USA. **Periodicals postage paid** at Alexandria, Virginia, and additional mailing offices. POSTMASTER: Send address changes to *Amstat News*, 732 North Washington Street, Alexandria VA 22314-1943 USA. Send Canadian address changes to APC, PO Box 503, RPO West Beaver Creek, Rich Hill, ON L4B 4R6. Annual subscriptions are \$50 per year for nonmembers. *Amstat News* is the member publication of the ASA. For annual membership rates, see [www.amstat.org/join](http://www.amstat.org/join) or contact ASA Member Services at (888) 231-3473.

American Statistical Association  
732 North Washington Street  
Alexandria, VA 22314-1943 USA  
(703) 684-1221 • FAX: (703) 684-2037

**ASA GENERAL:** [asainfo@amstat.org](mailto:asainfo@amstat.org)

**ADDRESS CHANGES:** [addresschange@amstat.org](mailto:addresschange@amstat.org)

**AMSTAT EDITORIAL:** [amstat@amstat.org](mailto:amstat@amstat.org)

**ADVERTISING:** [advertise@amstat.org](mailto:advertise@amstat.org)

**WEBSITE:** <http://magazine.amstat.org>

Printed in USA © 2011  
American Statistical Association



The American Statistical Association is the world's largest community of statisticians. The ASA supports excellence in the development, application, and dissemination of statistical science through meetings, publications, membership services, education, accreditation, and advocacy. Our members serve in industry, government, and academia in more than 90 countries, advancing research and promoting sound statistical practice to inform public policy and improve human welfare.

## features

- 3 President's Corner
- 5 Highlights of the April 2011 Board of Directors Meeting
- 7 SIAM Offers Solution to Costly Textbooks
- 7 NISS Helps Construct U.S. Census Bureau's Synthetic Longitudinal Business Database
- 9 2010 Audit Report for the American Statistical Association
- 13 Discussion Papers Wanted
- 14 Meet New NCES Commissioner Jack Buckley
- 17 Japanese Colleagues Share Quake Experiences
- 19 Statistical Agencies' FY11 Budgets Cut
- 20 Section U: How Statistics Fits in at AAAS
- 23 2011 ORSEA Conference to Be Held in Nairobi
- 23 Former Indian President Lays Foundation Stone for Statistics Museum
- 24 *Statistical Analysis and Data Mining* Highlights Special Issue Features Symbolic Data Analysis

## columns

### 25 FUNDING OPPORTUNITIES NSF and NIH: Funding for FY11

This column highlights research activities that may be of interest to ASA members. These brief articles include information about new research solicitations and the federal budget for statistics. Comments or suggestions for future articles may be sent to ASA Research and Graduate Education Manager Keith Crank at [keith@amstat.org](mailto:keith@amstat.org).



Crank

#### Contributing Editor

Keith Crank earned a BS in mathematics education and an MS in mathematics from Michigan State University and a PhD in statistics from Purdue University. Prior to joining the ASA as research and graduate education manager, he was a program officer at the National Science Foundation, primarily in the probability program.



## Online Articles

The following articles in this issue can be found online at <http://magazine.amstat.org>.

**2011 IISA Conference a Great Success.** The focus was on younger statisticians during the International Indian Statistical Association (IISA) conference that took place April 21–24 at North Carolina State University. The conference, titled “Probability, Statistics, and Data Analysis,” attracted close to 300 participants and included both established and emerging young statisticians from around the world. Plenary talks were given by Sally Morton, University of Pittsburgh; Michael Jordan, University of California, Berkeley; and SRS Varadhan, New York University. Read the details at <http://magazine.amstat.org/blog/2011/05/16/2011iisa>.

**Operations Research Comes to Zimbabwe in a Big Way.** The executive committee of the Operations Research Society of South Africa (ORSSA) recently awarded its 2011 conference to the Zimbabwean OR community. In doing so, ORSSA hopes to foster greater collaboration and cooperation across southern African OR communities, accelerate the expansion of OR applications and education in Zimbabwe, and encourage the establishment of a Zimbabwean OR society. To read more about why the Zimbabwean community was chosen, visit <http://magazine.amstat.org/blog/2011/05/16/or>.

## columns

### 26 SCIENCE POLICY

#### **Controlling Decennial Census Costs Major Theme of Senate Hearing**

This column is written to inform ASA members about what the ASA is doing to promote the inclusion of statistics in policymaking and the funding of statistics research. To suggest science policy topics for the ASA to address, contact ASA Director of Science Policy Steve Pierson at [pierson@amstat.org](mailto:pierson@amstat.org).



Pierson

Contributing Editor

*Steve Pierson earned his PhD in physics from the University of Minnesota. He spent eight years in the physics department of Worcester Polytechnic Institute before becoming head of government relations at the American Physical Society.*

### 29 STATtr@k

#### **Some Pearls of Wisdom**

STATtr@k is a column in *Amstat News* and a website geared toward people who are in a statistics program, recently graduated from a statistics program, or recently entered the job world. To read more articles like this one, visit the website at <http://stattrak.amstat.org>. If you have suggestions for future articles, or would like to submit an article, please email Megan Murphy, *Amstat News* managing editor, at [megan@amstat.org](mailto:megan@amstat.org).



Rawlings

Contributing Editor

*John O. Rawlings is professor emeritus, department of statistics, North Carolina State University. He earned his bachelor's in technical science and his master's in agronomy from the University of Nebraska. Additionally, he earned his PhD in both statistics and crop science from North Carolina State University, where he was professor of statistics until 1994. He is a Fellow of the American Statistical Association and the Crop Science Society of America.*

## departments

### 32 meetings

Preparing for Miami  
*JSM Chair Prerogatives*

## member news

- 34 People News
- 36 Awards and Deadlines
- 38 Section • Chapter • Committee News
- 40 Calendar of Events
- 41 Professional Opportunities

# Professional Service: What's in It for Me?

I've heard recently that narcissism appears to be increasing. A *New York Times* article (April 26, p. D1) described an analysis of three decades of hit songs appearing on the Billboard Hot 100 chart. The analysis revealed a statistically significant increased trend toward the use of the words "I" and "me" in popular song lyrics, along with a corresponding decrease of "we" and "us." Some find this trend disturbing and would like to turn it around. So this column is about "we" and "us."

In my February column, I mentioned that the president-elect's primary responsibility is to make more than 150 committee appointments. President-elect Bob Rodriguez is in the process of doing that now. Finding 150 volunteers to contribute to the ASA community is no small feat! The appointments are made through a network of active ASA members, especially the vice chairs of the Leadership Support Council, which oversees the committees, and the committee chairs. By the time you read this, the next president-elect will have been announced. Have you ever thought about how you can become involved?

Why would anyone become involved in professional service, in particular service within the ASA? Some think in terms of "us" and believe we should be good citizens. We contribute to the community because it gives us a feeling of satisfaction, a feeling of "doing good." That's the altruistic reason. But there are other reasons, which should appeal to even those with a more personal motivation. Performing

---

There is reason to serve  
even if you are part of  
the "me" generation:  
You enhance your own  
professional network.

---



Nancy Geller

professional service can provide new challenges and expand one's horizons.

There is reason to serve even if you are part of the "me" generation: You enhance your own professional network. When you perform professional service, you meet others who also are involved. Some might have jobs to offer. Some might have common research interests. Some might be famous statisticians who, it turns out, could become a reference for you. Someone might tell you about an interesting paper they read that just might open up a completely new research area for you. Some might become your colleagues, your friends, or even your life partner!

Following is a list of longtime members of the American Statistical Association who were inadvertently omitted from the Longtime Member recognition list printed in the April issue of *Amstat News*. We sincerely apologize for the error.

### 50+ Years

Maxim (Bud) Goode  
Zakkula Govindarajulu  
Michael H. Kutner

### 45–49 Years

Javad Behboodian  
Herbert T. Davis III  
Richard G. Krutchkoff

### 40–44 Years

Kimion J. E. Constas  
Stephen L. George  
Samuel Litwin  
Lars Lyberg  
George A. Milliken  
Robert A. Peterson  
Pranab K. Sen  
Aaron Tenenbein  
Ram C. Tripathi  
Tommy D. Waters  
David G. Whitmore

### 35–39 Years

Robert W. Aldred  
Jeffrey P. Busse  
Fredric C. Genter  
Allen E. Izu  
Naoto Kunitomo  
J. Richard Landis  
Thomas P. McWilliams  
Cyrus R. Mehta  
Thomas Reiland  
Jeffrey A. Robinson  
David Ruppert  
Robert R. Starbuck  
Grace Wahba  
Farroll T. Wright

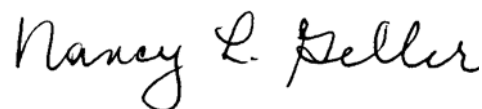
Another motivation mixes the “me” with the “us.” In performing professional service, you find role models (the “me”) and might become a role model (the “us”). You’re never too old or too experienced to look for new role models. And you’re never too young to be a role model for someone else. Professional service offers an opportunity to demonstrate your skills and teach them to others. It is also an opportunity to learn new skills. Watching from a distance (whether an especially effective speaker or the outstanding conductor of a meeting) is not as effective as learning from them how they became so effective.

Being active in the profession also will count in some ways toward career advancement. Some activities indicate you have standing in your profession, such as journal editorial board membership and membership on important committees.

Of course, you don’t start at the top. While 2012 committee appointments are well under way, you may volunteer to be on an ASA committee for 2013 by filling out a form on the ASA web site ([www.amstat.org/committees/nominations/index.cfm](http://www.amstat.org/committees/nominations/index.cfm)). A list of committees can be found at [www.amstat.org/committees/committeelist.cfm](http://www.amstat.org/committees/committeelist.cfm). The ASA is eager to have “new blood” active in the organization.

Another way to get involved in the ASA is through sections ([www.amstat.org/sections/sectionlist.cfm](http://www.amstat.org/sections/sectionlist.cfm)), which deal with specific areas of statistics; chapters, which are regional groups ([www.amstat.org/chapters/index.cfm](http://www.amstat.org/chapters/index.cfm)); and outreach groups ([www.amstat.org/outreachgroups/index.cfm](http://www.amstat.org/outreachgroups/index.cfm)), which involve common activities and interests that don’t fit into the traditional chapter or section structures. Everyone is welcome to join a section, chapter, or outreach group and begin to contribute to the ASA that way.

I would be remiss if I did not acknowledge the ASA’s core of active, altruistic, and wonderful volunteers, and I thank them for their many contributions. I hope those of you not yet involved will be stimulated to join them.



Make sure you visit the Statisticians in the News page online at [www.amstat.org/about/statisticiansinthenews.cfm](http://www.amstat.org/about/statisticiansinthenews.cfm) to read about your colleagues and friends in the statistical community.

# Highlights of the April 2011 Board of Directors Meeting

ASA President Nancy Geller led the board through a packed agenda during its first meeting of 2011 at the ASA Office in Alexandria, Virginia, April 8–9. Here are the highlights:

- Based on recommendations from the respective search committees and Committee on Publications, the board appointed Ron Christensen as editor of *The American Statistician* and Jim Albert as editor of the *Journal of Quantitative Analysis in Sports*. Both appointments are for 2012–2014.
- The board reappointed Keith Ord as treasurer. Ord will continue to serve through 2013.
- As he does at each meeting, Ord updated the board on the status of ASA financials. He reviewed the 2010 financials, during which the ASA ended up slightly in the black, and looked at the status of the financials for this year and for future budgets. Ord noted that the ASA is tightly managing its resources and this is necessary for continued success.
- The board approved the audit report for 2010 and thanked Steve Porzio, ASA assistant executive director and director of operations, and his accounting staff for another excellent audit.
- President-elect Bob Rodriguez presented an overview of four initiatives he has planned for the coming year and received feedback from the board. The details will be finalized during spring and early summer. Further information will appear in *Amstat News* later this year.
- Rodriguez also reported on a unique discussion held at the ASA office on March 28. Rodriguez and Executive Director Ron Wasserstein met with expert managers in the field of business analytics to discuss the nature of their work and the role the ASA might play in advancing the careers of members in this area of statistical practice. ASA members Bob Starbuck, Dave Dickey, and Jim Rosenberger also were engaged in this discussion.
- The board also received progress reports on the current initiatives launched by Geller.
- The board heard a proposal to declare an International Year of Statistics in collaboration with the International Statistical Institute, the Royal Statistical Society, and others. Further discussion about this proposal will take place over the summer.
- Steve Pierson, ASA director of science policy, organized a panel discussion during which the board learned about a variety of issues related to legislation regarding the level of autonomy for the U.S. Census Bureau. Panel members included Connie Citro, executive director, CNSTAT; Louis Kincannon, U.S. Census Bureau director, 2002–2008; Ken Prewitt, U.S.

## 2011 ASA Board of Directors

Nancy Geller, President

Bob Rodriguez, President-elect

Sastry Pantula, Past-President

Christy Chuang-Stein, Third-Year Vice President

Rod Little, Second-Year Vice President

Mary Mulry, First-Year Vice President

Jeri Mulrow, Third-Year Council of Sections Representative

Jessica Utts, Second-Year Council of Sections Representative

John Bailer, First-Year Council of Sections Representative

David Marker, Third-Year Council of Chapters Representative

Tom Short, Second-Year Council of Chapters Representative

Bonnie LaFleur, First-Year Council of Chapters Representative

Ray Chambers, International Representative

Karen Kafadar, Publications Representative

Keith Ord, Treasurer

Ron Wasserstein, ASA Executive Director

Census Bureau director, 1998–2000, and vice president for Global Centers, Columbia University; and Andrew Reamer, research professor, Institute of Public Policy, The George Washington University.



- The board heard a report from the Committee on Scientific Freedom and Human Rights (CSFHR) about human rights problems faced by official statisticians in Argentina. CSFHR chair, Bill Seltzer, presented the report, which suggested action steps for the board. The board concurred with the committee's recommendations and follow up is under way.
- Iain Johnstone, chair of the Accreditation Committee, reported on the status of the accreditation program one year after the board approved the implementation plan. Johnstone noted, among other things, that the program is in full swing, with the application process open to all eligible members. See [www.amstat.org/accreditation](http://www.amstat.org/accreditation) for details on how to apply. Geller thanked Johnstone for his outstanding leadership of the process.
- The board reviewed proposals received through the Member Initiative Program and decided to award full or partial funding to five of them.
- The board considered proposals for two new journal partnerships with other societies. The proposals had been reviewed and recommended by the Committee on Publications. The executive committee of the board will follow up on these proposed journals.
- The leadership of the *Journal on Computational and Graphical Statistics* proposed moving to single blind reviewing. Double-blind reviews are becoming virtually impossible for this journal because the source material reviewed is difficult to blind. The board concurred with the proposal, subject to the approval of our partners—the Institute of Mathematical Statistics and the Interface Foundation of North America.
- Vice President Christy Chuang-Stein reported to the board on the status of committees under the Membership Council. The board was asked to follow up on concerns raised by some committees. This report and the related follow-up are part of the board strategy for committee management that was implemented during 2010.
- As it does at each meeting, the board heard reports on the status and well-being of the sections and chapters from the board representatives of those bodies. Both the Council of Chapters and Council of Sections governing boards meet regularly by conference call to manage issues of importance to the chapters and sections.
- The board approved a plan to develop a partnership with the Public Relations Society of America to develop best practices guidelines for public relations professionals using statistics.

The board next meets on June 17 in Alexandria, Virginia, for its annual budget meeting. The next regular meeting of the board is July 29–30, prior to JSM in Miami Beach. ■

**PASS**  
just got better

Now over 165 procedures  
3x faster calculations  
Enhanced interface  
New graphics

Learn about **PASS 11** at  
**ncss.com**

**NCSS**  
Statistical Software

(800) 898-6109  
sales@ncss.com



# SIAM Offers Solution to Costly Textbooks

If you're an instructor, you know students don't want to pay a lot for their course texts, which means you struggle to find affordable texts for your courses. If you're a student, you need your book funds to stretch as far as they can. That's why SIAM, joint publisher of the ASA-SIAM Series on Statistics and Applied Probability, has enacted the Textbook Adoption Discount Program, which offers students 20% off list price for any SIAM book adopted as a primary text for an undergraduate or graduate-level course. This discount may be used by all students enrolled in the course and is available only on books ordered directly from SIAM.

**Instructors:** Browse the SIAM catalog at [www.siam.org/catalog](http://www.siam.org/catalog) to see if any of our titles suit your course. We encourage you to comb through all of SIAM's titles to find one that's just right for your students, but if you'd like to narrow your search, we also offer a textbooks-only page ([www.siam.org/books/textbooks](http://www.siam.org/books/textbooks)) that sorts books by category.

If you adopt an ASA-SIAM series book or any SIAM title as a primary text, you should apply for the discount before the semester begins by contacting Sara Murphy at [murphy@siam.org](mailto:murphy@siam.org) with your request and providing a copy of your syllabus. You'll be given a discount code to share with your students so they can order their textbooks from SIAM and save 20% off list price.

**Students:** If you are an ASA member, you can always get the 30% member discount on books

in the ASA-SIAM series by ordering directly from SIAM. SIAM members get 30% off any SIAM title. If you're not a member of either organization, encourage

your instructors to take advantage of the Textbook Adoption Discount Program so you can save 20% off list price for your required texts. ■

## NISS Helps Construct U.S. Census Bureau's Synthetic Longitudinal Business Database

The U.S. Census Bureau announced in March that it is releasing its Synthetic Longitudinal Business Database Beta Data Product (SynLBD) for use by the general public. The SynLBD was produced by the Census Bureau in collaboration with the National Institute of Statistical Sciences (NISS), Duke University, Cornell University, the Internal Revenue Service, and the National Science Foundation. Research statistician Satkartar (Saki) Kinney led the NISS effort.

The purpose of SynLBD is to provide users access to a longitudinal business data product that can be used outside of secure Census Bureau facilities. The SynLBD contains synthesized information about establishments' employment and payroll, as well as their birth and death years and actual industrial classification. The synthetic data are generated by fitting models to the confidential data and using these to simulate the replacement values. The goal is to preserve broad analyses in the data while protecting the confidentiality of individual establishments.

According to NISS Director Alan Karr, "Within the data confidentiality world, establishment data are more problematic than household or individual data, especially because large establishments are so easy to recognize. Although the nature of the difficulties is still emerging, longitudinal data are proving to be challenging in multiple ways, especially when there are ongoing releases of data."

Researchers and others interested in using the SynLBD product may apply for a free user account on the Cornell University Virtual RDC at [www.vrdc.cornell.edu/news/synthetic-data-server](http://www.vrdc.cornell.edu/news/synthetic-data-server). For more information, visit the SynLBD website at [www.ces.census.gov/index.php/lbd](http://www.ces.census.gov/index.php/lbd).

# All New Statistics Books from Chapman & Hall/CRC Press



## Practical Multivariate Analysis Fifth Edition

Abdelmonem Afifi, Virginia A. Clark, and Susanne May

Catalog no. K10864, July 2011, c. 536 pp.  
ISBN: 978-1-4398-1680-6, \$89.95 / £44.99

## Handbook of Markov Chain Monte Carlo Edited by

Steve Brooks, Andrew Gelman, Galin Jones, and Xiao-Li Meng

Catalog no. C7941, May 2011, c. 619 pp.  
ISBN: 978-1-4200-7941-8, \$99.95 / £63.99

## Principles of Uncertainty

Joseph B. Kadane

Catalog no. K12848, May 2011, c. 503 pp.  
ISBN: 978-1-4398-6161-5, \$89.95 / £57.99

## R Graphics Second Edition

Paul Murrell

Catalog no. K11535, June 2011, c. 548 pp.  
ISBN: 978-1-4398-3176-2, \$79.95 / £49.99

## Handbook of Adaptive Designs in Pharmaceutical and Clinical Development

Edited by

Annpay Pong and Shein-Chung Chow

Catalog no. K10507, January 2011, 496 pp.  
ISBN: 978-1-4398-1016-3, \$99.95 / £63.99  
Also available as an eBook

## Design and Analysis of Non-Inferiority Trials

Mark D. Rothmann, Brian L. Wiens, and Ivan S.F. Chan

Catalog no. C8040, July 2011, c. 464 pp.  
ISBN: 978-1-58488-804-8, \$89.95 / £57.99

## Handbook of Parametric and Nonparametric Statistical Procedures Fifth Edition

David J. Sheskin

Catalog no. K12706, April 2011, 1926 pp.  
ISBN: 978-1-4398-5801-1, \$169.95 / £108.00

## Smoothing Splines Methods and Applications

Yuedong Wang

Catalog no. C7755, June 2011, 400 pp.  
ISBN: 978-1-4200-7755-1, \$89.95 / £57.99



Visit us during JSM at  
Booths 201-304



CRC Press

Taylor & Francis  
Chapman & Hall Books

Use promo code **343CM** when ordering at  
**www.crcpress.com** to **SAVE 20%.**

Offer expires August 31, 2011.



## Independent Auditor's Report

To the Board of Directors  
American Statistical Association  
Alexandria, Virginia

We have audited the accompanying balance sheet of the American Statistical Association (the Association) as of December 31, 2010, and the related statements of activities and cash flows for the year then ended. These financial statements are the responsibility of the Association's management. Our responsibility is to express an opinion on these financial statements based on our audit. The prior year summarized comparative information has been derived from the 2009 financial statements and in our report, dated March 25, 2010, we expressed an unqualified opinion on those financial statements.

We conducted our audit in accordance with auditing standards generally accepted in the United States of America and the standards applicable to financial audits contained in *Government Auditing Standards* issued by the Comptroller General of the United States. Those standards require that we plan and perform the audit to obtain reasonable assurance about whether the financial statements are free of material misstatement. An audit includes consideration of internal control over financial reporting as a basis for designing audit procedures that are appropriate in the circumstances, but not for the purpose of expressing an opinion on the effectiveness of the entity's internal control. We did not identify any deficiencies in internal control that we consider to be reportable. Accordingly, we express no such opinion. An audit includes examining, on a test basis, evidence supporting the amounts and disclosures in the financial statements. An audit also includes assessing the accounting principles used and significant estimates made by management, as well as evaluating the overall financial statement presentation. We believe that our audit provides a reasonable basis for our

In our opinion, the 2010 financial statements referred to above present fairly, in all material respects, the financial position of the Association as of December 31, 2010, and the changes in its net assets and its cash flows for the year then ended in conformity with accounting principles generally accepted in the United States of America.

In accordance with *Government Auditing Standards*, we have also issued our report dated March 28, 2011, on our consideration of the Association's internal control over financial reporting and our tests of its compliance with certain provisions of laws, regulations, contracts and grant agreements, and other matters. The purpose of that report is to describe the scope of our testing of internal control over financial reporting and compliance and the results of that testing, and not to provide an opinion on the internal control over financial reporting or on compliance. That report is an integral part of an audit performed in accordance with *Government Auditing Standards* and should be considered in assessing the results of our audit.

McGladrey & Pullen, LLP

Vienna, Virginia  
March 28, 2011

McGladrey is the brand under which RSM McGladrey, Inc. and McGladrey & Pullen, LLP serve clients' business needs. The two firms operate as separate legal entities in an alternative practice structure.

Member of ERM International network, a network of independent accounting, tax and consulting firms.

## American Statistical Association

**Balance Sheet**  
**December 31, 2010**  
**(With Comparative Totals For 2009)**

Assets	2010	2009
Current Assets		
Cash and cash equivalents	\$ 1,132,317	\$ 1,052,109
Receivables, net	458,238	243,460
Prepaid expenses and other assets	211,322	186,167
<b>Total current assets</b>	<b>1,801,877</b>	<b>1,481,736</b>
Investments	9,655,556	8,459,916
Equity In Joint Ventures	238,702	307,782
Bond Issuance Costs	134,158	141,008
Property And Equipment, net	8,572,650	8,928,997
	<b>18,601,066</b>	<b>17,837,703</b>
	<b>\$ 20,402,943</b>	<b>\$ 19,319,439</b>

### Liabilities And Net Assets

Current Liabilities		
Accounts payable and accrued expenses	\$ 713,520	\$ 504,458
Due to joint ventures	98,197	270,970
Deferred revenue	2,561,647	2,308,178
Bonds payable – current	200,000	200,000
<b>Total current liabilities</b>	<b>3,573,364</b>	<b>3,283,606</b>
Bonds Payable – Less Current Portion	5,500,000	5,700,000
Interest Rate Swap Contract	573,450	488,972
	<b>9,646,814</b>	<b>9,472,578</b>

## Commitments And Contingencies (Notes 11 and 12)

Net Assets		
Unrestricted		
Undesignated	8,608,275	7,753,446
Board designated	1,223,734	1,170,195
	<u>9,832,009</u>	<u>8,923,641</u>
Temporarily restricted	435,864	434,964
Permanently restricted	<u>488,256</u>	<u>488,256</u>
	<u>10,756,129</u>	<u>9,846,861</u>
	\$ 20,402,943	\$ 19,319,439

See Notes To Financial Statements.

2

## American Statistical Association

Statement Of Activities  
Year Ended December 31, 2010  
(With Comparative Totals For 2009)

	2019					2009
	Unrestricted	Board Designated	Temporarily Restricted	Permanently Restricted	Total	
Revenue and support:						
Publications	\$ 2,207,632	\$ -	\$ -	\$ -	\$ 2,207,632	\$ 2,340,662
Meetings	2,166,341	-	-	-	2,166,341	2,282,866
Membership	1,714,701	-	-	-	1,714,701	1,552,679
Section income	73,060	627,396	-	-	700,396	569,072
Grants and awards	575,000	27,250	-	-	602,250	383,686
Special projects	535,499	4,772	44,465	-	584,736	456,248
Education	440,412	19,413	-	-	459,825	483,722
Administration	255,577	-	-	-	255,577	151,350
Net assets released from restriction	43,565	-	(43,565)	-	-	-
<b>Total revenue and support</b>	<b>8,011,817</b>	<b>678,741</b>	<b>900</b>	<b>-</b>	<b>8,691,458</b>	<b>8,219,917</b>
Expenses:						
Program services:						
Meetings	1,619,695	-	-	-	1,619,695	1,656,723
Publications	1,523,576	-	-	-	1,523,576	1,843,664
Special projects	1,261,946	5,469	-	-	1,267,415	1,276,130
Education	877,700	15,650	-	-	893,350	890,254
Membership	872,693	-	-	-	872,693	894,508
Section expenses	94,869	604,083	-	-	698,952	603,655
Grants and awards	567,026	-	-	-	567,026	399,470
<b>Total program services</b>	<b>6,817,505</b>	<b>625,202</b>	<b>-</b>	<b>-</b>	<b>7,442,707</b>	<b>7,537,413</b>
Supporting services:						
Management and general	1,164,250	-	-	-	1,164,250	1,197,408
<b>Total expenses</b>	<b>7,981,755</b>	<b>625,202</b>	<b>-</b>	<b>-</b>	<b>8,606,957</b>	<b>8,734,821</b>
<b>Change in net assets before unrealized gains (losses) on investments and interest rate swap contract</b>	<b>30,062</b>	<b>53,539</b>	<b>900</b>	<b>-</b>	<b>84,501</b>	<b>(514,904)</b>
Unrealized gain:						
Unrealized investment gain	909,245	-	-	-	909,245	1,828,698
Unrealized (loss) gain on interest rate swap contract	(84,478)	-	-	-	(84,478)	142,337
<b>Total unrealized gain</b>	<b>824,767</b>	<b>-</b>	<b>-</b>	<b>-</b>	<b>824,767</b>	<b>1,971,035</b>
<b>Change in net assets</b>	<b>854,829</b>	<b>53,539</b>	<b>900</b>	<b>-</b>	<b>909,268</b>	<b>1,456,131</b>
Net assets:						
Beginning	7,753,446	1,170,195	434,964	488,256	9,846,861	8,390,730
Ending	\$ 8,608,275	\$ 1,223,734	\$ 435,864	\$ 488,256	\$ 10,756,129	\$ 9,846,861

See Notes To Financial Statements.

3

## American Statistical Association

Statement Of Cash Flows  
Year Ended December 31, 2010  
(With Comparative Totals For 2009)

	2010	2009
<b>Cash Flows From Operating Activities</b>		
Change in net assets	\$ 909,268	\$ 1,456,131
Adjustments to reconcile change in net assets to net cash provided by operating activities:		
Depreciation	356,347	342,542
Amortization of bond issuance costs	6,851	6,851
Increase in allowance for doubtful accounts	20,000	-
Equity in earnings from joint ventures	69,080	(38,879)
Net unrealized and realized gains on investments	(984,257)	(1,726,082)
Loss (gain) on interest rate swap contract	84,478	(142,337)
Changes in assets and liabilities:		
(Increase) decrease in:		
Receivables	(234,778)	24,570
Prepaid expenses and other assets	(25,155)	81,891
Increase (decrease) in:		
Accounts payable and accrued expenses	209,062	107,882
Due to joint ventures	(172,773)	87,437
Deferred revenue	253,469	138,215
<b>Net cash provided by operating activities</b>	<b>491,592</b>	<b>338,221</b>
<b>Cash Flows From Investing Activities</b>		
Purchases of investments	(1,324,162)	(3,483,235)
Proceeds from sales of investments	1,112,778	3,620,382
Purchases of property and equipment	-	(86,313)
<b>Net cash (used in) provided by investing activities</b>	<b>(211,384)</b>	<b>50,834</b>
<b>Cash Flows From Financing Activities</b>		
Redemption of bonds	(200,000)	(200,000)
<b>Net cash used in financing activities</b>	<b>(200,000)</b>	<b>(200,000)</b>
<b>Net increase in cash and cash equivalents</b>	<b>80,208</b>	<b>189,055</b>
<b>Cash And Cash Equivalents</b>		
Beginning	1,052,109	863,054
Ending	\$ 1,132,317	\$ 1,052,109
<b>Supplemental Disclosures Of Cash Flow Information</b>		
Cash paid for income taxes	\$ 189,127	\$ 247,148
Cash paid for interest expense	\$ 284,986	\$ 321,101

See Notes To Financial Statements.

4



# 2010 Audit Report for the American Statistical Association (continued)

## American Statistical Association

### Notes To Financial Statements

#### Note 1. Nature Of Activities And Significant Accounting Policies

**Nature of activities:** The American Statistical Association (the Association) was founded in 1839 and incorporated in 1841 under the not-for-profit laws of the Commonwealth of Massachusetts as a professional association serving statisticians and all individuals interested in the study and/or application of statistics. The Association's objectives are to foster statistics and its applications, to promote unity and effectiveness of effort among all concerned with statistical problems, and to increase the contribution of statistics to human welfare. The Association conducts meetings, produces publications devoted to statistical methodology and its applications, makes available information concerning the science of statistics and its contributions, cooperates with organizations in the advancement of statistics, stimulates research, promotes high professional standards and integrity in the application of statistics to problems of science and of public policy, fosters education in statistics, and in general, makes statistics of service to science and society.

A summary of the Association's programs and services follows:

**Meetings:** The Association provides for various workshops and meetings that serve as a forum for the latest developments in statistical theory and application. These meetings offer a concentrated opportunity for the exchange of ideas and discussion of research findings among colleagues.

**Publications:** The Association produces various publications and magazines. These publications represent the Association's commitment to the ongoing enhancement of statistical education and the public's understanding of statistics.

**Special projects:** Represent various projects undertaken to further statistics among the public. This includes expenses for various awards presented, which increase the visibility of statistics and its methods with the general public.

**Education:** The Association offers a wide range of continuing education opportunities which represent a forum for emerging statistics research. These programs include workshops, lectures, and expenses related to the production and sale of educational materials.

**Membership:** Expenses related to member service maintenance.

**Grants and awards:** Represent expenses related to providing advice and technical assistance, which enhance statistical education, through the support of federal, state, and local government agencies.

**Section expenses:** Represents the Association's organization in groups by professional subject matter. These sections facilitate professional interchanges and research opportunities in statistics.

**Management and general:** Includes the functions necessary to secure proper administrative functioning of the Board of Directors, maintain an adequate working environment, and manage financial and budgetary responsibilities of the Association.

A summary of the Association's significant accounting policies follows:

**Basis of accounting:** The financial statements are prepared on the accrual basis of accounting, whereby, revenue is recognized when earned and expenses are recognized when incurred.

5

## American Statistical Association

### Notes To Financial Statements

#### Note 1. Nature Of Activities And Significant Accounting Policies (Continued)

**Basis of presentation:** The financial statement presentation follows the recommendations of the Financial Accounting Standards Board Accounting Standards Codification. As provided by the topic for Financial Statements for Not-for-Profit Organizations, the Association is required to report information regarding its financial position and activities according to three classes of net assets: unrestricted net assets, temporarily restricted net assets, and permanently restricted net assets.

**Cash and cash equivalents:** The Association considers all highly liquid instruments, which are to be used for current operations and which have an original maturity of three months or less, to be cash and cash equivalents. All other highly liquid instruments, which are to be used for the long-term purposes of the Association, are classified as investments.

**Financial risk:** The Association maintains its cash in bank deposit accounts which, at times, may exceed federally insured limits. The Association has not experienced any losses in such accounts. The Association believes it is not exposed to any significant financial risk on cash.

The Association invests in mutual funds, which are comprised of shares of publicly traded companies and fixed income obligations. Such investments are exposed to various risks such as market and credit. Due to the level of risk associated with such investments and the level of uncertainty related to changes in the value of such investments, it is at least reasonably possible that changes in risks in the near term would materially affect investment balances and the amounts reported in the financial statements.

**Receivables:** Receivables are carried at original invoice amounts, less an estimate made for doubtful receivables based on a review of all outstanding amounts on a monthly basis. Management determines the allowance for doubtful accounts by identifying troubled accounts and by using historical experience applied to an aging of accounts. Receivables are written off when deemed uncollectible. Recoveries of receivables previously written off are recorded when received. The provision for doubtful accounts, based on management's evaluation of the collectability of receivables, was \$10,718 at December 31, 2010. No interest is charged on any outstanding receivables.

**Investments:** Investments with readily determinable fair values are recorded at fair market value. To adjust the carrying value of the investments, the change in fair value is recorded as a component of investment income in the statement of activities.

**Equity in joint ventures:** The Association has investments in certain joint ventures for which the equity method of accounting is used. Under the equity method, original investments are recorded at cost and adjusted by the Association's share of undistributed earnings or losses of these joint ventures.

**Property and equipment:** Property and equipment are stated at cost and are depreciated over their estimated useful lives on the straight-line method. The Association capitalizes all property and equipment purchased with a cost of \$2,500 or more.

6

## American Statistical Association

### Notes To Financial Statements

#### Note 1. Nature Of Activities And Significant Accounting Policies (Continued)

**Valuation of long-lived assets:** The Association accounts for the valuation of long-lived assets in accordance with the Financial Accounting Standards Board (FASB) Accounting Standards Codification. As required by the Non-Profit Entities topic of the FASB Accounting Standard Codification, *Accounting for the Impairment or Disposal of Long-Lived Assets*, long-lived assets and certain identifiable intangible assets are to be reviewed for impairment whenever events or changes in circumstances indicate that the carrying amount of an asset may not be recoverable. Recoverability of the long-lived asset is measured by a comparison of the carrying amount of the asset to future undiscounted net cash flows expected to be generated by the asset. If such assets are considered to be impaired, the impairment to be recognized is measured by the amount by which the carrying amount of the assets exceeds the estimated fair value of the assets. Assets to be disposed of are reportable at the lower of the carrying amount or fair value, less costs to sell.

**Interest rate swap contract:** The Association follows the Financial Accounting Standards Board Accounting Standards Codification, *Accounting for Derivative Instruments and Hedging Activities*, related to its participation in an interest rate swap contract in relation to its mortgage note, which is considered a derivative financial instrument. This codification standard requires that all derivative financial instruments be recognized in the financial statements at their fair value. Changes in the fair value of derivative financial instruments are recognized each period as a component of change in net assets.

**Bond issuance costs:** The Association paid certain customary fees as required to secure the note used to finance the acquisition of its new headquarters. These fees have been capitalized and are being amortized over the term of the bonds. Amortization expense was \$6,851 for the year ended December 31, 2010.

**Board designated net assets:** The Board of Directors has designated \$1,223,734 at December 31, 2010, of unrestricted net assets to be used for various section activities and other board-approved projects.

**Revenue and support:** Membership dues are recognized ratably over the applicable membership period to which they apply. Payments for memberships, subscription sales, product sales, or services to be rendered and received in advance are deferred to the appropriate period.

Meeting revenue is recognized at the time the meeting takes place. Amounts received in advance of the meeting are shown as deferred revenue.

Publication revenue is recognized upon delivery of the material.

All donor-restricted revenue is reported as an increase in temporarily or permanently restricted net assets, depending on the nature of the restriction. When a restriction expires (that is, when a stipulated time restriction ends or purpose restriction is accomplished), temporarily restricted net assets are reclassified to unrestricted net assets and reported in the statement of activities as net assets released from restrictions. Temporarily restricted net assets are reported as unrestricted net assets if the restrictions are met in the same period.

**Functional allocation of expenses:** The costs of providing various programs and other activities have been summarized on a functional basis in the statement of activities. Accordingly, certain costs have been allocated among the programs and supporting services benefited.

7

## American Statistical Association

### Notes To Financial Statements

#### Note 1. Nature Of Activities And Significant Accounting Policies (Continued)

**Income taxes:** The Association is exempt from federal income taxes under Section 501(c)(3) of the Internal Revenue Code. In addition, the Association qualifies for the charitable contribution deductions and has been classified as an organization that is not a private foundation. However, the Association is required to report unrelated business income to the Internal Revenue Service and the state of Virginia, as well as pay certain other taxes to local jurisdictions. The Association incurred approximately \$138,000 in income tax expense on unrelated business income related to the net income earned on advertising sales for the year ended December 31, 2010.

The accounting standard on accounting for uncertainty in income taxes, which addresses the determination of whether tax benefits claimed or expected to be claimed on a tax return should be recorded in the financial statements. Under this guidance, the Association may recognize the tax benefit from an uncertain tax position only if it is more likely than not that the tax position will be sustained on examination by taxing authorities, based on the technical merits of the position. The tax benefits recognized in the financial statements from such a position are measured based on the largest benefit that has a greater than 50 percent likelihood of being realized upon ultimate settlement. The guidance on accounting for uncertainty in income taxes also addresses de-recognition, classification, interest and penalties on income taxes, and accounting in interim periods.

Management evaluated the Association's tax positions and concluded that the Association had taken no uncertain tax positions that would require disclosure. The Association files income tax returns in the U.S. federal jurisdiction. Generally, the Association is no longer subject to U.S. federal, or state and local income tax examinations by tax authorities for years before 2007.

**Fair value of financial instruments:** The carrying amounts including cash and cash equivalents, accounts receivable, accounts payable and accrued liabilities approximate fair value because of the short maturity of these instruments. The carrying amount of bonds payable approximates fair value, because the interest rate on this instrument fluctuates with market interest rates available to the Association with similar terms and maturities.

**Use of estimates:** The preparation of financial statements requires management to make estimates and assumptions that affect the reported amounts of assets and liabilities and disclosure of contingent assets and liabilities at the date of the financial statements, and the reported amounts of revenue and expenses during the reporting period. Actual results could differ from those estimates.

**Prior year information:** The financial statements include certain prior year summarized comparative information in total but not by net asset class. Such information does not include sufficient detail to constitute a presentation in conformity with accounting principles generally accepted in the United States of America. Accordingly, such information should be read in conjunction with the Association's financial statements for the year ended December 31, 2009, from which the summarized information was derived.

**New pronouncements:** In January 2010, the Financial Accounting Standards Board (FASB) released Accounting Standards Update No. 2010-06 (ASU 2010-06), which provided accounting guidance that requires new fair value measurement classification disclosures and clarifies existing disclosures. The guidance requires: (i) separate disclosures of significant transfers between Levels 1 and 2 and reasons for transfers; (ii) disclosure, on a gross basis, of purchases, sales, issuances and net settlements within Level 3 measurements; (iii) disclosures by class of assets and liabilities; and (iv) a description of the evaluation techniques and inputs used to measure fair value for both recurring and nonrecurring fair value measurements. The guidance is effective for interim and annual reporting periods beginning after December 15, 2009, except for the disaggregation of the Level 3 activity, which is effective for interim and annual periods beginning after December 15, 2010. The Association adopted ASU 2010-06 during the year ended December 31, 2010.

**Subsequent events:** The Association evaluated subsequent events through March 28, 2011, which is the date financial statements were issued.

8

# 2010 Audit Report for the American Statistical Association (continued)

## American Statistical Association

### Notes To Financial Statements

#### Note 2. Receivables

Receivables consist of the following at December 31, 2010:

Grants receivable	\$ 198,108
Trade accounts receivable	124,438
Other receivables	98,228
Due from joint ventures	48,182
	<u>468,956</u>
Less provision for doubtful accounts	10,718
	<u>\$ 458,238</u>

#### Note 3. Investments

Investments, at fair market value, consist of the following at December 31, 2010:

Equity mutual funds	\$ 6,068,777
Fixed income mutual funds	3,348,373
Money market *	238,406
	<u>\$ 9,655,556</u>

\* Money market funds are not subject to the provisions of the fair value measurements as they are recorded at cost.

The following summarizes investment income for the year ended December 31, 2010:

Interest and dividends	\$ 295,730
Realized gain	75,012
	<u>370,742</u>
Unrealized gain	909,245
	<u>\$ 1,279,987</u>

Interest, dividends, and realized gains are recorded in the applicable revenue and support line items in the statement of activities.

9

## American Statistical Association

### Notes To Financial Statements

#### Note 4. Equity In Joint Ventures

The following schedule presents summarized financial information from the joint ventures in which the Association has equity ownership. Amounts presented for the year ended December 31, 2010, include the accounts of Journal of Computational and Graphical Statistics (40 percent equity) and Technometrics (60 percent equity).

Condensed income statement information:	
Revenues	\$ 306,881
Expenses	<u>239,621</u>
Net income	<u>\$ 67,260</u>

#### Condensed balance sheet information:

Total assets	\$ 713,601
Total liabilities	<u>241,167</u>
Net equity	<u>\$ 472,434</u>

#### Note 5. Property And Equipment

Property and equipment and accumulated depreciation at December 31, 2010, and depreciation expense for the year ended December 31, 2010, are as follows:

	Estimated Lives	Cost	Accumulated Depreciation	Depreciation Expense
Building	30 years	\$ 7,320,951	\$ 1,118,444	\$ 244,032
Building leasehold improvements	30 years	1,170,369	172,928	39,243
Building renovation	30 years	23,100	3,197	783
Office equipment	5 years	85,235	78,323	2,513
Furniture and fixtures	5 years	211,869	194,712	41,160
Computer equipment	3 years	122,170	121,303	2,176
Software	3 years	204,161	162,298	26,440
Land	-	1,286,000	-	-
		<u>\$ 10,423,855</u>	<u>\$ 1,851,205</u>	<u>\$ 356,347</u>

10

## American Statistical Association

### Notes To Financial Statements

#### Note 6. Temporarily And Permanently Restricted Net Assets

Temporarily restricted net assets are available at December 31, 2010, for the following purposes and net assets were released from restriction by incurring expenses satisfying the restricted purpose.

	Balance December 31, 2009	Restricted Contributions	Investment Income	Released	Balance December 31, 2010
Cox Scholarship	\$ 104,117	\$ 11,865	\$ 3,215	\$ 4,000	\$ 115,197
Waksberg Award	70,240	-	1,924	2,500	69,664
Youden Award	41,104	-	2,874	1,164	42,814
Wray Smith Sch. Fund	29,491	-	833	-	30,324
Derning Lecture Fund	26,295	-	2,624	1,602	27,317
MG Natrelia Scholarship Fund	27,149	-	730	1,000	26,879
EC Bryant Award	25,186	-	2,339	2,500	25,025
Chambers Award (ACM Software)	18,087	-	522	-	18,609
Noether Funds	20,263	-	6,159	8,343	18,079
Dixon Award	14,993	-	670	500	15,163
Griffith Mentoring Award	8,978	2,800	421	1,859	10,340
CA Jacobs Award	7,192	-	207	-	7,399
Marquardt Memorial	5,912	-	869	-	6,781
Waller Education Fund	5,436	-	695	510	5,621
Access to Statistics Fund	1,460	2,395	-	-	3,855
Mood - Wilks Supplement	2,510	-	1,175	-	3,685
Chemostatistics Award	3,155	-	88	-	3,243
Promoting Statistics Fund	1,715	1,507	-	-	3,222
Wilks Memorial	3,224	-	403	1,530	2,097
Excellence in Statistics Fund	400	150	-	-	550
Other Short Term Restricted	18,057	-	-	18,057	-
	<u>\$ 434,964</u>	<u>\$ 18,717</u>	<u>\$ 25,748</u>	<u>\$ 43,565</u>	<u>\$ 435,864</u>

Permanently restricted net assets consist principally of accumulated contributions for various awards, lecture series, and scholarships. These assets consist of the following at December 31, 2010:

	Balance December 31, 2009	Additions	Balance December 31, 2010
Noether Memorial Fund	\$ 206,506	\$ -	\$ 206,506
Derning Lecture Fund	67,275	-	67,275
Youden Award	61,082	-	61,082
EC Bryant Fund	60,000	-	60,000
Wilks Memorial Fund	47,143	-	47,143
Marquardt Memorial Fund	26,250	-	26,250
Waller Fund	20,000	-	20,000
	<u>\$ 488,256</u>	<u>\$ -</u>	<u>\$ 488,256</u>

11

## American Statistical Association

### Notes To Financial Statements

#### Note 6. Temporarily And Permanently Restricted Net Assets (Continued)

The Board of Directors of the Association has interpreted the Uniform Prudent Management of Institutional Funds Act (UPMIFA) as requiring the preservation of the fair value of the original gift as of the gift date of the donor-restricted endowment funds absent explicit donor stipulations to the contrary. As a result of this interpretation, the Association classifies as permanently restricted net assets (a) the original value of gifts donated to the permanent endowment, (b) the original value of subsequent gifts to the permanent endowment, and (c) accumulations to the permanent endowment made in accordance with the direction of the applicable donor gift instrument at the time the accumulation is added to the fund. The remaining portion of the donor-restricted endowment fund that is not classified in permanently restricted net assets is classified as temporarily restricted net assets until those amounts are appropriated for expenditure by the organization in a manner consistent with the standard of prudence prescribed by UPMIFA. In accordance with UPMIFA, the Association considers the following factors in making a determination to appropriate or accumulate donor-restricted endowment funds:

- The duration and preservation of the fund
- The purposes of the organization and the donor-restricted endowment fund
- General economic conditions
- The possible effect of inflation and deflation
- The expected total return from income and the appreciation of investments
- Other resources of the Association
- The investment policies of the Association

The Association has adopted investment and spending policies for endowment assets that attempt to provide a predictable stream of funding to programs supported by its endowment while seeking to maintain purchasing power of the endowment assets.

All earnings of the endowment are reflected as temporarily restricted net assets until appropriated for expenditure by the various Committees of the Association. The Board of Directors has assigned a Committee to each program for the purposes of selecting and recommending individuals for awards or grants.

For the year ended December 31, 2010, the Association had the following endowment-related activities:

	Temporarily Restricted	Permanently Restricted
Endowment net assets - December 31, 2009	\$ 129,932	\$ 488,256
Net appreciation and income	17,137	-
Appropriation of endowment assets for expenditure	(15,649)	-
Endowment net assets - December 31, 2010	<u>\$ 131,420</u>	<u>\$ 488,256</u>

12



# 2010 Audit Report for the American Statistical Association (continued)

## American Statistical Association

### Notes To Financial Statements

#### Note 7. Retirement Plans

The Association has a 401(k) profit sharing plan and a money purchase plan. Both plans cover substantially all full-time employees from date of hire. Under the terms of the 401(k) profit sharing plan, the Association will match 100 percent of the participating employee's contributions up to three percent of the employee's salary. Under the terms of the money purchase plan, the Association contributes six percent of an eligible employee's compensation to the plan. Contribution expense to the plan is as follows for the year ended December 31, 2010:

Money purchase plan	\$ 157,731
401(k) profit sharing plan	75,951
	<u>\$ 233,682</u>

#### Note 8. Related Party Transactions

The Association is a co-sponsor in several joint ventures. It has maintenance agreements with the same joint ventures in which it provides management and collection services, office space, and editorial and administrative support.

The following schedules summarize the Association's financial activity with the joint ventures for the year ended December 31, 2010:

Due from Joint Ventures:	
Journal of Computational and Graphical Statistics	\$ 7,513
Technometrics	40,669
	<u>\$ 48,182</u>

Due to Joint Ventures:	
Technometrics	\$ (49,606)
Journal of Computational and Graphical Statistics	(48,591)
	<u>\$ (98,197)</u>

Maintenance Agreement Revenue:	
Technometrics	\$ (39,655)
Journal of Computational and Graphical Statistics	(18,000)
	<u>\$ (57,655)</u>

13

## American Statistical Association

### Notes To Financial Statements

#### Note 9. Bond Payable

On August 1, 2005, the Association entered into an agreement with the Industrial Development Authority of the City of Alexandria to issue \$6,500,000 of Industrial Development Revenue Bonds on behalf of the Association to finance the purchase and renovation of a new headquarters building. The Bonds are secured by a letter of credit (LOC) issued by SunTrust Bank and bear an adjustable interest rate periodically set by a remarketing agent. The LOC agreement between the Association and SunTrust Bank, dated August 1, 2005, bears an interest rate of .34 percent. Interest expense incurred for the year ended December 31, 2010, was \$284,986.

Annual principal payments on the bond payable at December 31, 2010, are due in future years as follows:

Years Ending December 31,	
2011	\$ 200,000
2012	200,000
2013	200,000
2014	200,000
2015	200,000
2016 – 2030	4,700,000
	<u>\$ 5,700,000</u>

The above-mentioned note is collateralized by the land and building purchased by the Association.

In connection with the mortgage note, the Association has agreed, among other things, to (1) maintain an unrestricted liquidity ratio not less than 80 percent of the funded debt, and (2) maintain a debt coverage ratio of 1.25 to 1.

#### Note 10. Interest Rate Swap Contract

The Association has an interest rate swap contract with a bank to reduce the impact of changes in the interest rates on its variable mortgage note. The swap contract was entered into for a ten-year period commencing on October 14, 2005. The notional principal amount of the interest rate swap contract was \$5,700,000 as of December 31, 2010. In accordance with the swap contract, the Association pays a fixed rate of interest of 3.99 percent and receives a variable interest rate equal to the USD-BMA municipal swap index 0.29806 percent at December 31, 2010. The Association recognized a loss of \$84,478 under the interest swap contract for the year ended December 31, 2010. At December 31, 2010, the fair value of the swap contract was a liability of \$573,450. The swap contract terminates in August 2015.

#### Note 11. Commitments

**Hotel space:** The Association reserves hotel space for its conventions several years in advance. The contracts stipulate the number of rooms to be reserved and the time period for which they are to be reserved. As of the date of this report, contracts for hotel space had been entered into through 2015. However, due to the numerous variables involved, the Association's potential liability under these contracts cannot be determined.

**Employment agreement:** The Association has entered into an employment contract with the Executive Director of the Association, which expires on August 15, 2015. The contract provides for severance payments equal to a maximum amount of up to ten months of compensation depending on the years of service.

14

## American Statistical Association

### Notes To Financial Statements

#### Note 12. Contingencies

The Association participates in a number of federally assisted grant programs, which are subject to financial and compliance audits by the federal agencies or their representatives. As such, there exists a contingent liability for potential questioned costs that may result from such an audit. Management does not anticipate any significant adjustments as a result of such an audit.

#### Note 13. Fair Value Measurements

The Statement of Financial Accounting Standards Board Accounting Standards Codification on Fair Value Measurements establishes a single authoritative definition of fair value, sets out a framework for measuring fair value, and requires additional disclosures about fair value measurements. This standard applies to all assets and liabilities that are being measured and reported on a fair value basis. The standard requires disclosure that establishes a framework for measuring fair value in GAAP and expands disclosure about fair value measurements. This standard enables the reader of the financial statements to assess the inputs used to develop those measurements by establishing a hierarchy for ranking the quality and reliability of the information used to determine fair values. The standard requires that assets and liabilities carried at fair value will be classified and disclosed in one of the following three categories:

- Level 1 – Quoted market prices in active markets for identical assets or liabilities
- Level 2 – Observable market-based inputs or unobservable inputs corroborated by market data
- Level 3 – Unobservable inputs that are not corroborated by market data

In determining the appropriate levels, the Association performs a detailed analysis of the assets and liabilities that are subject to the standard. At each reporting period, all assets and liabilities for which the fair value measurement is based on significant unobservable inputs are classified as Level 3. There were no Level 3 inputs for any assets held by the Association at December 31, 2010.

The table below presents the balances of assets and liabilities measured at fair value on a recurring basis by level within the hierarchy:

	Total	Level 1	Level 2	Level 3
<b>Financial assets:</b>				
Equity mutual funds				
Global real estate fund	\$ 954,356	\$ 954,356	\$ -	\$ -
Small and mid-cap fund	728,974	728,974	-	-
International fund	1,237,782	1,237,782	-	-
S&P 500 Index fund	3,147,665	3,147,665	-	-
	<u>6,068,777</u>	<u>6,068,777</u>	<u>-</u>	<u>-</u>
Fixed income mutual funds				
Total return	2,519,774	2,519,774	-	-
High yield	828,599	828,599	-	-
	<u>3,348,373</u>	<u>3,348,373</u>	<u>-</u>	<u>-</u>
	<u>\$ 9,417,150</u>	<u>\$ 9,417,150</u>	<u>\$ -</u>	<u>\$ -</u>
<b>Financial liabilities:</b>				
Interest rate swap contract	\$ (573,450)	\$ -	\$ (573,450)	\$ -

15

## American Statistical Association

### Notes To Financial Statements

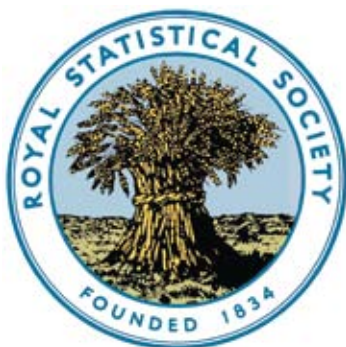
#### Note 13. Fair Value Measurements (Continued)

The equity and fixed income mutual funds of the Association are publicly traded on the New York Stock Exchange and are considered Level 1 items. Money market funds of \$238,406 are included in the total investments. Money market funds are not subject to the provisions of the fair value measurements as they are recorded at cost. The Association's interest rate swaps are pay-fixed, receive-variable interest rate swaps based on the LIBOR swap rate. The LIBOR swap rate is observable at commonly quoted intervals for the full term of the swaps, and is therefore, considered a Level 2 item.

16



# Discussion Papers Wanted



The Research Section of the Royal Statistical Society is seeking manuscripts for possible publication, with discussion, in the *Journal of the Royal Statistical Society Series B* (*JRSSB*). With a five-year impact factor of 4.75, *JRSSB* is ranked as second by the ISI Web of Knowledge in the Statistics and Probability category and first among mainstream statistics journals.

Publication of discussion papers is a long-standing tradition of the journal. Upon acceptance, a discussion paper is presented before the society at one of its ordinary meetings and published in the journal with contributions from discussants and the authors' response. Typically, *JRSSB* discussion papers attract a large number of discussion contributions, either presented at the meeting or submitted subsequently in writing, and go on to become highly cited.

Papers should contain original work that is at the leading edge of methodological development and have a strong emphasis on relevance to statistical practice and the clear potential for stimulating discussion. This includes papers

on statistical models, methods of analysis, and the theory that underlies them—almost invariably motivated or illustrated by real examples.

*JRSSB* aims to disseminate work that is innovative, insightful, and likely to have a substantial impact on the way data are collected and analyzed. Within these parameters, the journal's scope is broad, embracing, for example, relevant work in applied probability, computational methods, and the foundations of

statistics. Discussion papers should be written to attract a large and varied audience and encourage discussion contributions from others. Papers written for specialist groups are unlikely to be accepted.

To submit your work, go to ScholarOne Manuscripts at <http://mc.manuscriptcentral.com/jrss> and choose "Paper for Reading—Series B" as Manuscript Type. For questions, email the research section secretary, Piotr Fryzlewicz, at [p.fryzlewicz@lse.ac.uk](mailto:p.fryzlewicz@lse.ac.uk). ■

## NEW SOLAS 4.0 The Key to Missing Data Analysis

**SOLAS for Missing Data Analysis** provides researchers with a range of nine imputation techniques in an easy to use, validated software application.

Our just-released **SOLAS 4.0** version gives you:

✓ **several new multiple imputation techniques**

- ✓ mahalanobis distance metric matching
- ✓ predictive mean matching
- ✓ combined propensity score and predictive mean matching

✓ **expanded 64-bit capability**

✓ **enhanced missing data pattern feature**

✓ **brand new plotting facilities**

✓ **with guidance from Donald B. Rubin,  
the inventor of Multiple Imputation**

**For more details and a  
free online demo, call  
800.262.1171 or visit  
[SOLASMissingData.com](http://SOLASMissingData.com)**



Brought to you by **statistical  
solutions**

# Meet New NCES Commissioner Jack Buckley

*A* *mstat News* invited new commissioner of the National Center for Education Statistics to respond to the following questions so readers could learn more about him and the agency he directs. Look for other statistical agency head interviews in past and forthcoming issues.



Sean P. "Jack" Buckley is commissioner of the National Center for Education Statistics. Previously, he served as deputy commissioner of NCES from 2006 to 2008. Buckley has taught statistics and education policy at Georgetown University, Boston College, and the State University of New York at Stony Brook and spent five years in the U.S. Navy as a surface warfare officer and nuclear reactor engineer. He holds an AB in government from Harvard and an MA and PhD in political science from SUNY Stony Brook.

## What about this position appealed to you?

As an academic, my primary research interests have been applied statistics and education policy. NCES, as the federal statistical agency for education, is the perfect nexus of both. In addition, I was fortunate enough to serve as deputy commissioner from 2006–2008, so I knew a lot about both our outstanding staff and our fascinating mission to collect data on all aspects of the condition of education in the United States.

Although the Department of Education only dates back to 1980, a federal office by various names has collected education statistics since 1867 under different Cabinet agencies. It is a great privilege to play a role in maintaining this proud tradition.

## Describe the top 2–3 priorities you have for NCES.

First, the integrity of NCES and the data we collect must be paramount. The center has a solid record for honesty and accuracy and our data are generally regarded as apolitical, non-partisan, and nonideological. I am keenly aware that I have inherited this reputation from

my predecessors and I know that my staff and I must pass it on to our successors. There can be no compromise with respect to our integrity.

Second, NCES must strive to retain the relevance of our data and reporting. It does us, and the nation, little good if we accurately and thoroughly measure aspects of education that are irrelevant to policymakers and the public while failing to report on areas central to current policy debates.

A second dimension of relevance is timeliness. The most accurate answers to exactly the right questions are nevertheless irrelevant if they arrive too late. Timeliness is always in tension with quality; it is our responsibility at NCES to let neither win at the expense of the other.

My third priority is rigor. As a federal statistical agency, our reporting and methodology must be at the leading edge of many fields, including measurement, psychometrics, statistical computing, survey sampling, instrument design, field data collection, and confidentiality and statistical disclosure limitation. And yet we need rigor without mortis; the requirement for scientific excellence must not stifle new

ideas. A key part of maintaining this balance in the next few years will be the completion of the ongoing review and revision of our internal statistical standards and the expansion of opportunities for our staff to receive training in methodological advances.

Finally, NCES must remain innovative. Our history is one of spectacular innovation: large-scale, nationally representative, multi-level surveys and national, state, and international assessments pushing the boundaries of psychometrics are all the more impressive because their methods were devised to operate when computers were slow and processing time expensive. In the few months I have been back, I have been pleased to observe innovative work across the center.

## What do you see as your biggest challenge(s) for NCES?

In the last 10 years, there has been a vast increase in the amount of administrative data in U.S. education, especially in grades K–12, driven at least in part by changes in federal policy. Although NCES has been involved in this revolution, particularly through our State Longitudinal Data Systems grant program, we have not yet

realized the full potential of these data for both reporting purposes and improving survey and assessment operations.

A particular challenge with respect to these data is fulfilling our mandate to create voluntary common education data standards for state longitudinal education data systems. We're about 7–8 years behind here and progress must be quick.

### How can the statistical community help you?

We're very fortunate at NCES to have the assistance of several communities: the fantastically strong statistics and survey research world here in DC, the small but essential community of psychometricians and measurement specialists, and the broader group of empirical education researchers. People from all three groups have, historically, donated their time and invaluable expertise to our data collections. For example, John Tukey's role on the technical advisory panel to the National Assessment of Educational Progress (NAEP) in 1965, or James Coleman's pioneering longitudinal study designs in the 1970s.

My hope is that we can ensure this partnership remains vital, and I will be seeking the input of statisticians and statistically minded social scientists to advise us on all aspects of our work.

### Prior to your tenure, what do you see as the biggest recent accomplishment of the agency?

The No Child Left Behind Act of 2002 required several substantial changes to the National Assessment of Educational Progress that greatly improved the program. NCLB requires state participation in reading and mathematics assessments in grades 4 and 8 every two years (formerly every four years).

## NCES Fast Facts

Part of the Institute of Education Sciences at the Department of Education

Website: <http://nces.ed.gov>

Fiscal year 2010 budget: \$264 million

Staff size: 112

NCES redesigned NAEP to permit reporting within six months (formerly 12–18 months) with reports targeted to the general public.

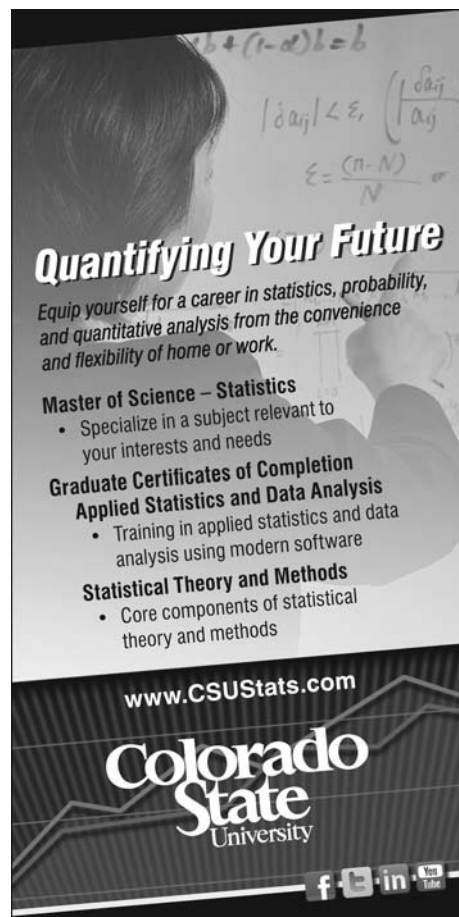
To permit comparisons among the states for reading and mathematics, the sample sizes for grades 4 and 8 combined increased from around 15,000–30,000 to more than 300,000 students assessed every two years in these subjects alone. This increase in scope, combined with the rapid reporting schedule, required significant improvements in all areas of operations.

### What makes NCES unique in the federal statistical community?

Like most other statistical agencies, NCES has a portfolio of universe and sample survey data collections and a growing focus on administrative data. What sets us apart, however, is our role in educational assessment. In any given year, through programs like NAEP and the comparative international assessments (PISA, TIMSS, PIRLS), NCES is assessing the cognitive skills of hundreds of thousands of U.S. students at a wide range of grade levels—even the adult population through the OECD's Program of International Assessment of Adult Competencies (PIAAC) and, historically, the National Assessment of Adult Literacy (NAAL).

These assessments pose a unique set of challenges in terms of item design, psychometrics,

and complex sampling. Results from these data collections allow NCES to measure where American students stand in subject areas ranging from reading and mathematics to civics and the arts, and they make it possible for policymakers to compare academic achievement and adult literacy among states and across nations. ■



**Quantifying Your Future**

Equip yourself for a career in statistics, probability, and quantitative analysis from the convenience and flexibility of home or work.

**Master of Science – Statistics**

- Specialize in a subject relevant to your interests and needs

**Graduate Certificates of Completion**

**Applied Statistics and Data Analysis**

- Training in applied statistics and data analysis using modern software

**Statistical Theory and Methods**

- Core components of statistical theory and methods

[www.CSUSTats.com](http://www.CSUSTats.com)

**Colorado State University**

f t in



# Introducing



Salford Systems Predictive Modeling Suite (SPM) is a highly accurate and ultra-fast platform for developing predictive, descriptive, and analytical models from databases of any size, complexity, or organization.

Salford SPM automation accelerates the process of model building by conducting substantial portions of the model exploration and refinement process for the analyst.

While the analyst is always in full control, we optionally anticipate the analyst's next best steps and package a complete set of results from alternative modeling strategies for easy review. Do in one day what normally requires a week or more using other systems.

## Simply Superior

Salford Systems' tools have dominated the fiercely contested field of data mining competitions for nearly a decade. Since 2000, no other vendor has come close to our record of consistent out-performance.

**CART**

CART generates a clear, easy-to-understand classification and regression tree that analyzes large, complex databases, discovering patterns and relationships.



TreeNet is the most powerful implementation of stochastic gradient boosting. TreeNet accounts for the majority of Salford's modeling competition awards.



MARS is ideal for users who prefer results in a form similar to traditional regression while capturing essential nonlinearities and interactions.



RandomForests features include clusters and segments, anomaly tagging, and multivariate class discrimination.

...and look for our soon-to-be-released advanced data mining technologies including TreeNet ICL™, PathSeeker™, ISLE™, PRIM™ and Rulefit™.

2010 DMA Analytics Challenge  
Make-A-Wish Foundation Targeting Solution,  
Lapsed Donor Segments

INFORMS 2009  
Healthcare Quality Task

2009 KDDCup  
CRM task, telecom dataset

2008 DMA Analytics Challenge  
Direct Marketing Optimization task

2008 Scientific Computing  
Data Mining Readers' Choice Award

2007 DMA Analytics Challenge  
Targeted Marketing task

2007 PAKDD  
Cross-selling task, financial dataset

2006 PAKDD  
Upselling task, telecom dataset

2004 KDDCup  
Particle Physics task

2002 Duke/TeraData  
Churn Modeling, CRM

2000 KDDCup  
Web Analytics

For more information and a free, fully functional  
90 day SPM evaluation, visit:

[www.salford-systems.com/amstat2010.html](http://www.salford-systems.com/amstat2010.html)

9685 Via Excelencia, Suite 208, San Diego, CA 92126  
phone: (619)543-8880 fax: (619)543-8888  
<http://www.salford-systems.com>



# Japanese Colleagues Share Quake Experiences

Nitis Mukhopadhyay, University of Connecticut-Storrs

On March 11, Japan experienced one of the world's strongest earthquakes, which was followed by a Pacific Ocean tsunami of historic proportions. I have many colleagues, collaborators, and friends in Japan, so I was distraught upon hearing of the disaster and immediately began visiting the websites of a number of Japanese universities. Many sites were down, but I eventually connected with the University of Tsukuba's site. The university was shut down and badly damaged. By the morning of March 13, I had not heard anything about the well-being of my friends and colleagues from the university, so I decided to send out the following email:

My Dearest Colleagues,

I realize that you live in different places in Japan, but you also may have families, other loved ones, colleagues, students, and friends in some of those devastated areas. In this time of utter misery and total despair, my earnest hope and prayer is that you and yours are all safe and everyone is doing as well as can be expected. ... In 2004, I was in Sri Lanka with my wife and two sons, landed there for the International Sri Lankan Conference just two days before that Tsunami hit. Those unimaginable and horrific images are coming back. ... When you get a chance, just let me please know that you are all doing alright. A reply from you will help ease some of the distress and pain that I feel for my super friends and colleagues in Japan. ... All the best and God bless.

Eiichi Isogai, a professor at Niigata University, wrote back "... I would like to appreciate your kindness. My family and I are safe and my house was not damaged. Thank you again. ..."

On March 12, Akimichi Takemura, a professor at the University of Tokyo, wrote "... Thank you very much for your mail. Tokyo area is OK. However, the northeast coastal area of the main island of Japan is devastated. ..."

Also on March 12, Yoshikazu Takada, a professor at the University of Kumamoto, wrote "... Thank you very much for your concern of the earthquake occurred in Japan last week. The place is very far away from my town. So I am all right [sic]. ..."

It was a relief knowing these colleagues and their families were safe, but I had not heard from anyone at the University of Tsukuba. My worries steadily



Books lie in piles at the Institute of Mathematics library, University of Tsukuba, after the earthquake in Japan on March 11.

Photo courtesy of Makoto Aoshima

increased as I expected the worst while hoping for the best. Eventually, I received a note from Professor Yata, who wrote "... Since the email has returned, I am now able to read emails from you. Thank you for your great concerns. My living city has broken a little by the earthquakes. However, I am OK and Prof. Aoshima is also OK. Thank you very much for worrying. We are fine. ..." So, on March 15 at 11:49:25 p.m., I began to relax.

On March 17 at 12:25:37 p.m., I heard from Professor Aoshima. He wrote, "... I saw your email just today because the university's mail server had been down after the earthquake (magnitude 9.0) hit my place. I could escape from the disaster. My office is on the 8th floor; that is the top of the building. The tall-large bookshelf behind my desk fell down and pieces of broken glass scattered here and there, even on my chair. The desk and chair and computers and printers and phone and copy machine and the others were covered and crushed by the fallen bookshelf. At that time, I was in the seminar room. I ordered my graduate students to keep themselves under the desks. I tried to open the door; however, I was very difficult to even stand myself in such heavy shakes. The terrible shakes had continued and grown for a few minutes. The seminar room's heavy bookshelves moved one meter right and left in front of my eyes like a monster spitting out lots of books here and there. During a short rest, I ordered students and colleagues to get out of the building from fire stairs. I was the last person to escape from the building. My past students, Yata and Yuko, are

safe and no damage since they are on the 5th floor, even in the same building. My family and my house are safe, since my house is on the first floor. It takes a while to revive. However, I learn from this very special experience. I get my life luckily. We are all safe. Thank you very much for your great consideration. ... All the best. ..."

Since Professor Aoshima was so expressive, I decided to ask him a few specific questions and requested he jot down his thoughts. Professor Aoshima briefly answered a number of my questions on March 20. Based on that brief "conversation" and a follow up on April 4, I include an edited email conversation below:

**Mukhopadhyay:** Where were you and what were you doing when the earthquake hit Japan?

**Aoshima:** I was in a seminar room of an eight-story building on campus. I was discussing with my graduate students their research projects.

**Mukhopadhyay:** Where was your family at the time? Could you "connect" with them right away after the earthquake?

**Aoshima:** They were in my house. I could not connect with them right away because mail server and telephone communication were down. However, I could get together after I was back to my house.

**Mukhopadhyay:** I know that you were on campus at the time. Were many buildings damaged? How severely? Anybody get hurt? What was the general situation on Day 1 and now?

**Aoshima:** There are many cracks in most buildings on campus, and the University Hall and the gymnasium were damaged. So, the graduation ceremony (usually held in the middle of March) was cancelled. Fortunately, I have not heard that anybody got hurt on campus.

**Mukhopadhyay:** From your university's website, I find that many nonemergency operations are shut down or are moving slowly. Is that continuing?

**Aoshima:** Web server is still partly shut down. Stopping the supply of water is continuing. Since aftershocks are continuing, things are moving along slowly and very carefully.

**Mukhopadhyay:** When do you expect your university's normal operations to begin again? How are the students? When are they coming back to campus?

**Aoshima:** We are preparing to start our university's normal operations in April, which is the beginning of the Japanese school year. Now, the students are having their spring vacation.

**Mukhopadhyay:** How far is your university from the center of the earthquake or those nuclear stations?

**Aoshima:** About 340 km from the center of the earthquake and about 170 km from nuclear stations.

**Mukhopadhyay:** Did the tsunami affect you and your local people? If so, how?

**Aoshima:** It seems that people living within 5 km from the ocean in Tohoku area were seriously affected by tsunami.

**Mukhopadhyay:** Which other universities in Japan are badly affected? Any news of major hardship or injuries or loss of life among university students and faculty and their friends?

**Aoshima:** It seems that universities in Tohoku-North Kanto areas were mainly affected. Although our university is located in North Kanto area, it seems not to be badly affected. I have not heard there is any news of major hardship or injuries or loss of life among university students and faculty and their friends. However, I have to mention that people hit by tsunami are still badly affected. Also, people living within 20 km from nuclear stations received official advice to evacuate, while some foreign media reported the distance at 80 km.

**Mukhopadhyay:** Right after the earthquake, what did you do? How about your family?

**Aoshima:** Right after the earthquake, we were all in inconvenient situations. However, soon afterward, we started to gradually recover, since we are not as badly affected compared with the people who got hit by the tsunami and nuclear disaster.

**Mukhopadhyay:** Are you teaching now? Probably not. So, how are you spending your time?

**Aoshima:** Fortunately, Japanese universities have been welcoming spring vacation, as usual in this season.

**Mukhopadhyay:** Do you have electricity, a supply of food, and other essential necessities?

**Aoshima:** Now, we are already starting to live as normally as possible. There seems to be no problem about essential items in this area.

**Mukhopadhyay:** How about the transportation to and from campus to your home?

**Aoshima:** There seems to be no problem about that in this area.

**Mukhopadhyay:** What is your impression of the magnitude of the nuclear disaster that followed the tsunami? Do you feel that you and your family and friends are alright? Personally, do you expect a big fallout, or is it just media hype? How far are you from that site?

**Aoshima:** I think that foreign media has portrayed Japanese situations very exaggeratedly and dramatically. Especially their reports about nuclear disaster sometimes seem to be excessively sensational. We Japanese are often perplexed with rumors spread from abroad.

**Mukhopadhyay:** Anything else?

**Aoshima:** Fortunately, there seems to be no problem in my immediate area. However, people hit by the tsunami and nuclear mishap are living in difficult situations. We feel concerned about them and consider seriously about the kind of helping hands they need from the rest of us right now. ■



# Statistical Agencies' FY11 Budgets Cut

## *Proposed initiatives left unfunded*

Steve Pierson, ASA Director of Science Policy

**T**he Energy Information Administration (EIA), U.S. Census Bureau, and National Agricultural Statistics Service (NASS) all saw their budgets cut in the Fiscal Year 2011 (FY11) budget deal signed by President Obama on April 15 to determine the federal budget through September 30. While the FY11 budgets for some statistical agencies weren't available by press time, most saw 0.2% across-the-board cut from their FY10 levels.

EIA's cut was the most severe at 14%—relative to its FY10 budget—to an FY11 level of \$95.4 million. In an April 28 press release, EIA Administrator Richard Newell stated, “The lower FY 2011 funding level will require significant cuts in EIA's data, analysis, and forecasting activities.” The press release lists 18 specific impacts and indicates other project curtailments are possible. The impacts range from not publishing certain data releases, analyses, and reports to halting some data collection and suspending projection model upgrades.

The Census Bureau budget was cut by at least \$93 million below its FY11 request of \$1.267 billion, but the impacts of these cuts weren't available as this issue went to press. (Comparison with its FY10 budget isn't meaningful because of the large costs in that fiscal year for executing the 2010 decennial census.)

The NASS FY11 budget was cut by 3% to \$157 million, resulting in the suspension of the quarterly Farm Labor Survey.



Other impacts are likely, but have not yet been disclosed.

The disappointment of the budget cuts or freezes for the statistical agencies is amplified by the fact that many were in line to have their budgets increased for FY11. In early 2010, Obama proposed increasing the budgets of many of the statistical agencies, some up to 17% over the FY10 level (see [http://magazine.amstat.org/blog/2010/04/01/sciencepolicy\\_apr10](http://magazine.amstat.org/blog/2010/04/01/sciencepolicy_apr10)). Congress approved parts of the increases for many agencies in their 2010 deliberations, but that support effectively expired when the new Congress took over

the FY11 budget deliberations in January.

With the administration generally requesting the same increases for FY12 (see <http://magazine.amstat.org/blog/2011/04/01/adminfy12budget>), the deliberations for FY12 will be another chance to voice support for the budget increases for many statistical agencies.

For more information or subsequent updates, go to the blog post “FY11 Budget Deal: Impacts on Science and Statistical Agency Budgets” in the ASA Community at <http://community.amstat.org>. ■

# Section U: How Statistics Fits in at AAAS

Joan F. Hilton, AAAS Section U Secretary, 2007-2011

At this year's annual meeting of the American Association for the Advancement of Science (AAAS), held in Washington DC over Presidents' Day weekend, Section U—the Statistics Section of AAAS—celebrated its 50th anniversary. Following are some historical highlights.

The AAAS was founded in 1848, during the presidency of James K. Polk, when the United States comprised 30 states and six territories. The census of 1850 counted 23.2 million inhabitants. AAAS was the first permanent organization formed to promote the development of science and engineering at the national level and to represent the interests of all its disciplines. The 1874 (second) AAAS constitution identifies two sections of the association—A (mathematics, astronomy, physics, chemistry, and mineralogy) and B (geology, zoology, botany, and anthropology)—and emphasizes the sections' roles in forming the program at the annual meeting.

By 1885, the sections had subdivided, and Section I included the fields of economic science and statistics. However, the 1920 (third) constitution does not mention statistics among its sections.

Fast forward to 1961, when AAAS formed two new Sections: T, information and communication, and U, statistics. John F. Kennedy was the U.S. president and Hawaii had joined the union in 1959 as the 50th state, bringing the 1960 population to 183.3 million. In its journal *Science*, the association announced the following:

Although statistics, as a methodology, has long been part of AAAS activities, affiliated statistical organizations were necessarily associated with the section on mathematics (A) or the section on social and economic sciences (K). The new section will serve to correlate these organizations and help intensify the contributions of persons engaged in statistical work.

Morris B. Ullman, the first secretary of Section U, explained that the section on statistics arose from the vision of several statistical organizations and that its activities would be directed by their members:

This action of the Council ... was the result of a proposal by the American Statistical Association, in which it was joined by the Institute of Mathematical Statistics,

the Biometric Society (ENAR), and the Psychometric Society. ... The Section Committee, the principal administrative body, will consist of representatives of these organizations, together with four members chosen at large, a vice president of the AAAS (who will serve as chairman of the section), and a secretary chosen by the AAAS Board of Directors. ... Current individual members of the AAAS who wish to be identified with Section U and nonmembers interested in joining the association should write to ..."

Jerzy Neyman, the first chair of Section U, articulated the possible functions of the Section on Statistics in a 1962 essay in *Science*. While recognizing that compartmentalization is a prerequisite for making progress in one's own field, he argued that "substantial progress can sometimes be achieved if a difficult problem is examined from a broader point of view, particularly if this creates the possibility of borrowing a method developed by another discipline." Neyman recommended that Section U "concentrate on activities, as an integral part of AAAS, largely limited to the popularization and decompartmentalization of research [—a field that] is broad, fertile, and most attractive."

To promote "fruitful intellectual cross-fertilization" between scientists and statisticians for the advancement of science, Neyman proposed that Section U offer sessions at the annual meeting "for informing the general public and other groups within AAAS of the use of statistics within various domains, including governmental agencies ..." As a means of drawing statistical leaders to AAAS meetings, Neyman suggested that regional meetings of affiliated societies be held in conjunction with the AAAS annual meeting.

The 1973 (sixth and current) AAAS constitution, in describing the function of sections, continues to emphasize their role in forming sessions at AAAS annual meetings: "Under the general direction of the section secretary, and within the context of overall plans for scientific meetings of the association, each section committee may arrange such section contributions to those meetings as it deems desirable." This constitution further indicates that representatives of affiliate societies are meant to co-direct AAAS sections:

Each section committee shall consist of (i) the section officers: the retiring section chairman, the section chairman, the section chairman-elect, and the section secretary; (ii) four members-at-large; (iii) one representative of each affiliate that is enrolled in the section; and (iv) the council delegate(s) of the corresponding electorate.”

“The corresponding electorate” consists of AAAS members who have followed Morris B. Ullman’s advice and advised the association that they wish to be identified with Section U.

Leap forward to 2011, the 50th anniversary of Section U and the 163rd anniversary of AAAS. Barack Obama is president of the United States and our population has reached 308.7 million. AAAS has more than 130,000 members, of whom 70,000 have formally identified section(s) of interest. Among the latter, 1,802 members identify with Section U (20% as their primary section, 34% as secondary, and 46% as tertiary). Remarkably, at least one person who identifies with Section U specifies each of the other 23 sections of AAAS as their primary

section. Thus, the AAAS continues to attract statisticians with diverse scientific interests.

Section U is affiliated with a variety of professional societies that also appoint representatives to other AAAS sections. These societies (Section U representatives) include the American Statistical Association (Robert Fay, Charmaine Dean), International Biometric Society (Hyune-Ju Kim), Institute of Mathematical Statistics (Jianqing Fan), Population Association of America (William Butz, Amy Tsui), Association for Women in Mathematics (Mary Gray), and Conference Board of the Mathematical Sciences (Ronald Rosier). Twice a year, these representatives meet with the Section U Steering Group. Current members are Thomas Louis, Mitchell Gail, Joel Greenhouse, Jane Pendergast, Betz Halloran, Alan Karr, Ronald Spoeri, and Ken Wachter.

To read more, visit <http://archives.aaas.org/exhibit/origins3.php>. For information about the society, visit the AAAS website at [www.aaas.org](http://www.aaas.org). ■



Jerzy Neyman

# StatXact<sup>®</sup>9

The Exact Statistical Software Standard

More non-parametric tests and procedures than any other

New in StatXact

- Write and run R scripts in StatXact
- Tests for two ordered correlated multinomials
- Exact designs for two independent binomials

[www.cytel.com](http://www.cytel.com)

T+1.617.661.2011



# Could teaching statistics be made even easier?

Now it CAN with XLSTAT

The most complete statistical solution for Microsoft Excel.

**XLSTAT**  
your data analysis solution

- Easy and intuitive to use
- Over a 100 methods available
- Integrates seamlessly with Microsoft Excel

Start your special **30 day** free trial now at <http://www.xlstat.com/amstat>

**Preparing data:** Data Sampling, Distribution Sampling, Discretization, Presence/Absence coding, Full Disjunctive Tables, Cross tables, Coding, Coding by Ranks, Variable transformations... **Describing data:** Descriptive Statistics (including box plots), Histograms, Resampling statistics, Contingency tables (Two-way Table), Correlations and Similarity/Dissimilarity Matrices, Normality tests... **Analyzing data:** Factor Analysis, Principal Component Analysis (PCA), Biplot, Discriminant analysis (DA), Correspondence Analysis (CA), Multiple Correspondence Analysis (MCA), Multidimensional Scaling (MDS), Agglomerative Hierarchical Clustering (AHC), k-means Clustering, Univariate Clustering. **Modeling data:** Distribution Fitting, Linear regression (simple, multiple, stepwise), ANOVA (multiple comparisons tests), ANCOVA, Logistic regression (Logit, Probit), Multinomial logistic regression, Nonlinear regression, Kernel regression, Regression trees.

**Tests:** Tests on Contingency Tables, Correlation tests, Parametric tests for comparison of two samples (F, t, z, Levene, Bartlett), Comparison of two proportions, Non parametric Tests on two independent samples (Kolmogorov-Smirnov, Mann-Whitney, Wilcoxon) or two paired samples (Wilcoxon's signed-ranks test and the sign test), Non parametric Tests on k independent samples (Kruskal-Wallis' test) or k paired samples (Friedman's test), Goodness of fit tests after distribution fitting (Chi-square, Kolmogorov-Smirnov), Normality tests, Cochran-Armitage trend test, Cochran Q test, McNemar's test, Runs test... **Visualizing data:** Excel charting utilities, Plot transformers, Scatter plots, Parallel coordinates... Complementary modules include **Survival Analysis**, **Monte Carlo simulations and risk analysis**, **Time series analysis**, **Sensory data analysis**, **PLS Path modeling**...

# 2011 ORSEA Conference to Be Held in Nairobi

Stephen Nyamwange and Gituro Wainaina

The Operations Research Society of Eastern Africa (ORSEA) will host ORSEA 2011, the seventh of its annual conferences, at the Kenyatta International Conference Center in Nairobi, Kenya, from October 13–14.

The conference is the premier operations research event in Eastern Africa, and this year's theme of "The Role of Operations Research in the National Visions Within the East African Community (EAC) and Regional Integration" will attract many operations researchers from the EAC countries of Kenya, Uganda, Tanzania, Rwanda, and Burundi. Participants from other African countries—as well as Europe, North America, South America, Asia, and the Pacific Rim—also are expected to participate.

Among other initiatives, this year's conference will feature the first INFORMS/IFORS/ORSEA International Teaching Effectiveness Colloquium, consisting of workshops on innovative approaches to operations research education by renowned educators. It also will provide opportunities to exchange ideas across cultures to those deeply interested in operations research education.

ORSEA chair Isaac Mbeche of the University of Nairobi hopes conference delegates from outside the region will spend a few extra days in Kenya. Attractions include wildlife watching, hiking, nature safaris, and remote beaches. Cultural interaction can be experienced through the diverse cultures of the Maasai, Samburu, and 42 other Kenyan communities.



Ostriches outside Nairobi, Kenya

Photo by Gituro Wainaina

For more information about ORSEA 2011, email [orsea@uonbi.ac.ke](mailto:orsea@uonbi.ac.ke) or [admin@orsea.net](mailto:admin@orsea.net).

Conference updates and information are available at [www.orsea.net](http://www.orsea.net). ■

## Former Indian President Lays Foundation Stone for Statistics Museum

On March 30, Indian scientist and former president of India A.P.J. Abdul Kalam lay the foundation stone for Sankhya, The National Museum of Statistics, at the University of Hyderabad campus.

The University of Hyderabad provided the land for the museum, and university vice chancellor Seyed E. Hasnain described the museum as one of a kind.

Before laying the stone, Abdul Kalam congratulated statistician C.R. Rao for "envisioning and providing the leadership for creation of such a unique institution in partnership with Hasnain."

Abdul Kalam spoke at length about statistics and society, as well as his personal experience with statisticians in managing difficult programs. To read his entire speech, visit Abdul Kalam's website at [www.abdulkalam.com](http://www.abdulkalam.com).

# Special Issue Features Symbolic Data Analysis

Lynne Billard, Special Issue Editor

This issue of *Statistical Analysis and Data Mining (SAM)* is dedicated to papers from the field of symbolic data analysis (SDA), one of the emerging fields featured in the February issue of *SAM* in Arnold Goodman's article, "Emerging Topics and Challenges for Statistical Analysis and Data Mining." This field will come to dominate our thinking and our approach to statistical analyses as contemporary computational capabilities expand.

While there are many data sets (small or large) that are naturally symbolically valued, it is in handling massively large data sets that we will see a major role for symbolic data. Typically from aggregation directed by underlying scientific question(s), the resulting data sets perforce contain symbolic data. In its most basic description, the familiar classical realization of a random variable is represented by a single point in  $p$ -dimensional space, whereas a symbolically valued realization is a hypercube or distribution in  $p$ -dimensional space.

The concept of symbolic data was first introduced in 1987 by Edwin Diday, who at the time was engaged in research in clustering methodologies. He recognized early that summarizing data values inside a cluster retained limited information only about the cluster (e.g., cluster means), while considerable information (e.g., cluster internal variations) was completely lost. This led to the general concept of symbolic data. This was a radical concept at the time; yet, it is an expansively creative approach to thinking about data in new ways that retain more completely the knowledge and information contained therein. It also became quickly apparent that new methodologies for symbolic data realizations were essential.

Diday's influence pervades all the contributions in this issue. The first two papers are review papers. "Brief Overview of Symbolic Data and Analytic Issues" is what an editorial board member called a "gentle introduction" to the field, restricting its content to illustrating the major types of symbolic data (modal multivalued, intervals, and histograms) and highlighting issues that are not usually present in classical data analyses. The paper also illustrates how other forms of complex data, such as fuzzy data, are quite a different domain, requiring different types of analytic methodologies. It concludes with a perspective of future research directions.

"Far Beyond the Classical Data Models: Symbolic Data Analysis" begins with a more technical introduction to symbolic data, how they arise, and their structures with numerous examples. Then, the authors provide an extensive review of the current state of the art, most especially available methodologies to handle a range of statistical analyses for various situations.

The third and fourth papers deal with aspects of principal component analysis. "Principal Component Analysis with Interval Imputed Missing Values" estimates missing values as interval values in a way that allows for the degree of uncertainty in the missingness. Then, the so-called vertices method for principal component analysis is applied. Also, new theoretical results are derived to support the methodology.

Much of current methodology in SDA has dealt with interval-valued observations. "The Quantile Method for Symbolic Principal Component Analysis" breaks new ground by subdividing modal multivalued data and histogram data into quantiles (more general than, but reminiscent of, Tukey's five-number summaries). The author develops monotone structures characterized by nesting joint regions; hence, traditional principal component analyses proceed.

The fifth paper, "Clustering Large Data Sets Described with Discrete Distributions and Its Application on TIMSS Data Set," presents two clustering methods—the adapted leaders method and the adapted agglomerative hierarchical clustering Ward's method—for data for which each realization is a discrete distribution. The new methodology is applied to a TIMSS data set.

Time series in the symbolic setting is a difficult problem and has received little attention. "Smoothing Methods for Histogram-Valued Time Series: An Application to Value-at-Risk," tackles both time series and histogram data. Using the notion of a barycenter histogram, the authors develop a one-step-ahead histogram forecast applied to a financial value-at-risk data.

The last paper, "Principal Component Analysis for Interval-Valued Observations," expands upon the vertices method and introduces new ways to visualize and interpret the resulting principal component hypercubes by placing bounds on the contributions of each vertex; it also shows how results obtained by using classical surrogates are inadequate.

These articles provide a small window into SDA's dynamic future. ■



## FUNDING OPPORTUNITIES

## NSF and NIH: Funding for FY11

Keith Crank, ASA Research and Graduate Education Manager

In my April article, I wrote about President Obama's budget request for Fiscal Year 2012 (FY12). I also mentioned that the FY11 appropriations had not been completed and the government was operating under a continuing resolution. That has finally changed. The full-year appropriations have been passed and signed into law. (The bill was still called a continuing resolution, but this time it covered the remainder of the fiscal year.)

The full-year continuing resolution was completed on April 14, just in time for Congress to go into a two-week recess. So, what did they finally agree to?

For the most part, the full-year continuing resolution was simply an extension of the previous continuing resolutions. However, they did "find" about \$37.6 billion to cut from the previous funding. In other words, the full-year continuing resolution is \$37.6 billion below the FY10 appropriations. I use the term "find" loosely here, since the completion of the data collection for the 2010 census freed up about \$6 billion. (However, Congress chose to use \$5 billion of that on additional spending for the Department of Defense, which means that much of the reduction is real.)

The appropriations for the National Science Foundation (NSF) are \$6.8 billion. Of this, \$5.5 billion is for research and related activities and \$0.9 billion is for education and human resources. (The remaining appropriations are primarily for running the agency.) Overall, this is a 1% decrease from the FY10 appropriations, but is a 7.6% decrease from the FY11 request. On the other hand, it is much better than the \$6.6 billion proposed by the House (H.R.1) back in February. As I mentioned in my April article, the request for FY12 is \$7.8 billion.

Given the current situation in Congress, I doubt the FY12 appropriations for NSF will come anywhere close to this number. In fact, the Obama administration has backed off from its planned doubling of the NSF budget. In an April 9 blog post, the administration states, "Even though we will no longer double the funding of key research and development agencies, you will still see strong investments in National Institute of Standards and Technology, National Science Foundation, and the Office of Science." (See [www.whitehouse.gov/blog/2011/04/09/details-bipartisan-budget-deal](http://www.whitehouse.gov/blog/2011/04/09/details-bipartisan-budget-deal))

For the National Institutes of Health (NIH), the results are similar. The FY11 appropriations for

NIH are \$30.7 billion, compared to a FY10 appropriation of \$31.0 billion. This is a 1% decrease from the FY10 appropriations and a 4% decrease from the FY11 request. But, it is much better than the \$29.4 billion proposed in H.R.1. Since the FY12 request for NIH has only a modest increase (and is below the FY11 request), it's possible that the appropriations will be close to the request. However, the Department of Defense appears to be the only part of the federal government that is immune to cuts.

To contact me, send an email to [keith@amstat.org](mailto:keith@amstat.org). Questions or comments about this article, as well as suggestions for future articles, are always welcome. ■

## ICESIV



## Fourth International Conference on Establishment Surveys (ICESIV)

Le Centre Sheraton Montréal Hotel  
Montréal, Québec, Canada  
June 11–14, 2012

Visit the ICESIV web page at  
[www.amstat.org/meetings/ices/2012](http://www.amstat.org/meetings/ices/2012) for details.

## SCIENCE POLICY

# Controlling Decennial Census Costs Major Theme of Senate Hearing

*Early planning, research, technology, and fixed term cited often*

Steve Pierson, ASA Director of Science Policy

**H**ow to control costs of the 2020 decennial census dominated testimony and questioning during an April 6 Senate hearing, titled “Census: Learning Lessons from 2010,

## 2010 Census Preliminary Evaluation

According to U.S. Census Bureau Director Bob Groves, early evaluation of empirical performance indicators suggests the decennial did well. The mail return rate in the 2010 Census matched the mail return rate for the short form of the 2000 Census. Since there was still a long form in 2000—the American Community Survey has since replaced it—the 2010 mail response rate “was actually better” than the combined short and long form return rate from 2000, Groves told the panel. This occurred, the director suggested, because of the mailing strategy, including a replacement form, the expanded partnership program, and more targeted advertising.

One sour note was that the number of households from which the bureau received information from “proxies”—neighbors, building managers, or others—rather than direct information, increased from 17% in 2000 to 22% in 2010. There was also a slight decrease in some item response rates compared to 2000, with the largest decline coming in the Hispanic Origin question. The difference was 94% in 2000 compared to 92.8% in 2010.

Another positive indicator providing confidence in the results, Groves contended, occurred because the census count matched the demographic analysis population estimates. The count was 308.7 million people. The mid-range estimate (out of five) was 308.5 million. The bureau is also in the midst of its post-enumeration survey that samples 170,000 housing units to help verify the results of the count. One preliminary result Groves reported was that address list matching significantly improved over 2000.

*Excerpted from the “Census Director Outlines Lessons Learned From 2010 Count” section of Silver’s April 18, COSSA Washington Update: <http://tinyurl.com/3moxro2>*

Planning for 2020.” The many approaches the U.S. Census Bureau is taking to address the cost of the next decennial census—while maintaining data quality—and realizing that prudent funding for 2020 decennial census planning now will save money down the road will be part of the message when trying to convince Congress to support the Fiscal Year 2012 (FY12) Census Bureau budget request.

Chaired by Sen. Thomas Carper (D-DE), chair of the Census Bureau authorizing subcommittee, and joined by subcommittee ranking member Sen. Scott Brown (R-MA) and Sen. Tom Coburn (R-OK), the first panel of the hearing featured Census Bureau Director Robert Groves, Commerce Department Inspector General Todd Zinser, and Government Accountability Office (GAO) Strategic Issues Director Robert Goldenkoff. Remarkably, the oversight witnesses—Zinser and Goldenkoff—had little criticism of Groves’s strategy for the 2020 decennial census planning.

With the cost of enumerating households rising from \$16 in 1970 to \$98 in 2010—both figures in 2010 dollars—GAO has estimated that the 2020 decennial could rise to as much as \$30 billion if the current design model is used. The 2010 decennial census cost \$13 billion. Groves reported the Census Bureau’s goal to “design a 2020 census that costs less per housing unit than the 2010 census, while maintaining the quality of the results.”

Among the three witnesses, the following common themes for how to reign in census costs emerged:

- Collect census data through multiple modes of technology to make responding to the questionnaire as convenient as possible, whether the modes be the phone, handheld device, Internet, or face-to-face. Implicit to these capabilities is having information technology architecture that can support multiple modes of data collection, including modes yet to emerge.

## Praise for Groves

Sen. Tom Coburn and Sen. Thomas Carper effusively expressed their support for U.S. Census Bureau Director Bob Groves. Adding to his past praise of Groves as being “just what the doctor ordered,” Coburn said, “I want to say publicly how enthused I am that we have very super competent leadership at the census. And I have great faith in Dr. Groves. I’ve seen what he took on, how he accomplished his mission, and his commitment to using science to make his organization more efficient. And so I’m one of your big backers.”

Referring to a Senate legislative proposal to give the census director a fixed five-year term starting in 2012, Coburn asked, “Are we going to get to keep you?” Carper seconded the thought, saying he hoped Groves would be the first director to fill a fixed five-year term.

- Use administrative records (e.g., drivers licenses or records from the Veterans Administration or the Social Security Administration) to supplement the enumeration process
- Continuously update address lists and maps, instead of intensely pushing toward decade’s end
- Risk and operations management changes such as shorter and smaller tests to ensure subsequent tests can incorporate test results, or systems development that doesn’t require first-use perfection
- Execute system and procedure innovations that benefit the entire institution
- Better cost-estimating and budget processes

Carper, Zinser, and Goldenkoff also spoke about the importance of a fixed term for the census director, who currently serves at the pleasure of the president. The average tenure of a census director since 1969, according to Goldenkoff, is three years, which makes the long-term planning so essential to a successful and cost-effective census.

Another theme discussed during the hearing was the importance of learning census lessons from countries such as Canada, Brazil, and the United Kingdom.

With spending cuts dominating congressional budget discussions, it will be a challenge to convince lawmakers to fully fund the FY12 request for the Census Bureau. For FY11, the Census Bureau was funded for \$93 million less than their request. The FY12 request—\$242 million less than the FY11 request because of 2010 decennial census wrap-up—contains \$67 million for 2020 decennial planning, \$9 million to enhance use of the administrative records, and funds for exploring the sample size of the American Community Survey and executing the Economic Census and the Census of Governments.

Mindful of the current fiscal environment, the FY12 budget request contains \$20 million in savings across the Census Bureau from administrative changes and \$16 million in savings from eliminating nine programs, including the Statistical Abstract program.

With the role Census Bureau data play in informing policy and guiding more than \$500 billion in federal spending, as well as the potential to save money on the 2020 Census through prudent investments now, there is a strong case to be made for fully funding the FY12 Census Bureau requested budget. The challenge is making sure lawmakers hear the case repeatedly from a variety of valued sources. ASA members can and should play an important role in communicating this message to their U.S. senators and representatives.

To see the written statements and testimony from this hearing, go to <http://hsgac.senate.gov/public/index.cfm?FuseAction=Subcommittees.FederalFinancialManagement>. [The direct link is [http://hsgac.senate.gov/public/index.cfm?FuseAction=Hearings.Hearing&Hearing\\_id=5cc28e38-9367-4e7d-81cc-da386cc2bc69](http://hsgac.senate.gov/public/index.cfm?FuseAction=Hearings.Hearing&Hearing_id=5cc28e38-9367-4e7d-81cc-da386cc2bc69).] ■

## Act to Improve Statistics Education, Literacy Introduced

### Support STAT Act of 2011

Rep. Dave Loebsack (D-IA) recently introduced the Statistics Teaching, Aptitude, and Training Act of 2011 (STAT Act) to improve statistics education and statistical literacy. The STAT Act would provide funding for the development of state academic content standards, student academic achievement standards, and professional development for teachers in statistics. It also would support building national capacity for statistics education by disseminating information about model statistics education programs and conducting studies on the effectiveness of methods of statistics education.

Support the STAT Act of 2011 by visiting [www.amstat.org/outreach/statliteracy](http://www.amstat.org/outreach/statliteracy).



# Meeting Within a Meeting (MWM) Statistics Workshop for K-12 Mathematics and Science Teachers

([www.amstat.org/education/mwm](http://www.amstat.org/education/mwm))

Sponsored by the American Statistical Association (ASA)  
2011 Joint Statistical Meetings (JSM)\*



Based on the Common Core State Standards for Mathematics ([corestandards.org](http://corestandards.org)) and *Guidelines for Assessment and Instruction in Statistics Education (GAISE): A Pre-K–12 Curriculum Framework* ([www.amstat.org/education/gaise](http://www.amstat.org/education/gaise))

- Dates:** Tuesday, August 2, and Wednesday, August 3, 2011, 8:00 a.m. to 3:30 p.m.
- Places:** Miami Beach Convention Center, 1901 Convention Center Drive, Miami Beach, FL 33139-1820, and neighboring hotels (workshop meeting room location to be announced)
- Audience:** K–12 mathematics and science teachers. Multiple mathematics/science teachers from the same school are especially encouraged to attend. Note: Experienced AP Statistics teachers should register for the Beyond AP Statistics (BAPS) workshop. See [www.amstat.org/education/baps](http://www.amstat.org/education/baps) for more information.
- Objectives:** Enhance understanding and teaching of statistics within the mathematics/science curriculum through conceptual understanding, active learning, real-world data applications, and appropriate technology
- Content:** Teachers will explore problems that require them to formulate questions; collect, organize, analyze, and draw conclusions from data; and apply basic concepts of probability. The MWM program will include examining what students can be expected to do at the most basic level of understanding and what can be expected of them as their skills develop and their experience broadens. Content is consistent with Common Core standards, GAISE recommendations, and *NCTM Principles and Standards for School Mathematics*.
- Presenters:** GAISE report authors and prominent statistics educators
- Format:** Tuesday: Grades K–4 and 9–12 sessions  
Wednesday: Grades 5–8 session  
One-day pass to attend activities at JSM (statistics education sessions, poster sessions, exhibit hall)  
Activity-based sessions, including lesson plan development
- Provided:** Refreshments  
Complimentary one-day pass to attend the Joint Statistical Meetings  
Lodging reimbursement (up to a specified amount) for teachers from outside the Miami area  
Handouts  
Certificate of participation from the ASA certifying professional development hours  
Optional graduate credit
- Cost:** The course fee for the two days is \$50. Note: Course attendees do not need to register for the Joint Statistical Meetings to participate in this workshop.
- Follow up:** Follow-up activities and webinars ([www.amstat.org/education/k12webinars](http://www.amstat.org/education/k12webinars))  
Network with statisticians and teachers to organize learning communities
- Registration:** Online registration available at [www.amstat.org/education/mwm](http://www.amstat.org/education/mwm). Space is limited. If interested in attending, please register as soon as possible.
- Contact:** Rebecca Nichols, [rebecca@amstat.org](mailto:rebecca@amstat.org); (703) 684-1221, Ext. 1877

\*The Joint Statistical Meetings is the largest annual gathering of statisticians, where thousands from around the world meet to share advances in statistical knowledge. The JSM activities include statistics education sessions, poster sessions, and the exhibit hall.

STATtr@k

# Some Pearls of Wisdom

John Rawlings, Professor Emeritus, North Carolina State University

At the encouragement of 2010 ASA President Sastry Pantula, I am summarizing the comments I made at a commencement address in 1995 to the department of statistics at North Carolina State University (NCSU). I hope you find them as useful as he did.

Let me share with you some of the philosophies I learned from the founder of our department, Gertrude Cox, who was a visionary and had an appreciation for multidisciplinary research even before that term became fashionable. Statistics is in one sense a rather unique field. While all sciences are interlinked in that research in one field builds on knowledge from many fields, the actual research projects in many cases are fairly isolated and survive under their individual umbrellas. Chemists can study compounds in their corner of the world without regard to what others are doing. Plant taxonomists can classify plants without interacting with chemists. Soil scientists, while they need to understand the chemistry and physics of soils, need not collaborate closely with physicists and chemists to do good research.

Statistics, on the other hand, is unique in the degree to which the vitality of the science is dependent on close linkages with other sciences. Why is this? Statistics is essentially a set of tools—tools for research, data gathering, and interpretation. It is a somewhat sophisticated set of tools, but, nevertheless, a set of tools. And, it is impossible to build a better tool without thoroughly understanding the problem the tool is supposed to address. Statisticians must interact closely with

researchers and practitioners in other fields, if we are to make our statistical tools relevant to the rest of society. Thus, the linkage with other sciences is essential to the life of statistical science.

Cox clearly saw the need for this close interaction when she formed this department. One of her conditions for coming here was that her department of statistics be required to provide statistical services to the College of Agriculture and Life Sciences. This close collaboration and the missionary work she and her faculty did to promote the use of statistics in the agricultural and life sciences were the key to building one of the strongest applied statistics programs in the world. Please note that what appeared to be a service provided by the statistics department for the rest of the college was, in reality, a major

benefit to the department. In this sense, one can say that statistics as a science profits most by giving. We must make sure that philosophy continues.

I want to convey a couple of my basic tenants, which I feel are important to you and your future careers. I have couched these in terms of an opportunity, a warning, and an obligation.

## Opportunity

Your degree in statistics has equipped you for a broad set of employment options. I can think of no other degree that opens so many doors for employment in so many areas of expertise. Every science, governmental agency, and industrial endeavor has many activities that could benefit from appropriate applications of statistical methods. This breadth of application of



---

## If you are going to be a successful statistician, you must always be “going to school”—learning new techniques, developing ways to answer new questions, etc.

---

statistics is clearly an opportunity for you in your initial employment, but it is also an opportunity for you in your career advancement. The statistician in an organization has the opportunity to work with many departments and projects within that organization. Because of this, he/she is in one of the better positions for developing a broad understanding of the entire business. With proper preparation on your part, this provides long-term opportunities for promotion within the company. There have been many occasions in which the statistician moved on to become one of the executives, such as director of research, because of this. Be prepared to take advantage of these opportunities.

### Warning

We have all heard the labeling for the three kinds of lies: lies, damn lies, and statistics. This labeling could have its origin from either of two places:

(1) To the “statistically disadvantaged,” who may not understand the workings of statistical

methods, some of the results and conclusions from data analysis may appear somewhat magical and the conclusions do not agree with their preconceived ideas. It is easy to see in such cases why someone might think statistics is just a sophisticated way of lying.

(2) Alternatively, it could just as likely have come from the misuse or misapplication of statistical methods by dedicated individuals who simply did not completely understand the theory and methodology. I do not mean to make disparaging remarks about other scientists, but we often see this when scientists, based on introductory courses in statistics, attempt to serve as their own statisticians.

We, as trained statisticians, contribute to this impression of statistics as a perhaps sophisticated way of lying when we fail to understand the theory and methodology, or fail to keep abreast of new developments, and simply apply the techniques to which we have been exposed by cookbook methods.

My warning to you is two-fold:

1. Your education in statistics is not complete with you having obtained this degree. There will always be data that do not quite “fit” the recipe you might have learned or problems that do not ask the “standard” question. If you are going to be a successful statistician, you must always be “going to school”—learning new techniques, developing ways to answer new questions, etc.

Paradoxically, if you are a successful statistician, you may begin to feel discouraged and inadequate because you never seem to know everything you need to know to do your job properly. This is a good sign; just don’t let it get you down. You must be

forever learning, or you will quickly become obsolete.

2. Your integrity is essential for your success as a statistician. You will have access to the basic data, you will do editing of the data, you will be the one who extracts the essential information from the data, and you will often be the one who makes the fundamental conclusions. If management or your scientific peers ever have any reason to question your integrity, they will lose faith quickly in what you claim the data have to say. Therefore, it is essential that you carefully guard your objectivity and your integrity.

Even if your aim in “doctoring the data” was to satisfy management at one turn, management would then be aware of what you are willing to do and have every reason to question your results at the next turn. Your integrity is essential, even if it means speaking up to management and possibly losing your job. You must uphold the integrity of your profession, and, not incidentally, you must live with yourself.

### Obligation

Finally, I would like to point out an obligation you have to yourself and your clients. As the statistician, you will be working with scientists, engineers, or individuals in other areas of expertise. The easiest method of operation (the lazy statistician’s way) is to sit back with the attitude that you know the statistics and it is the responsibility of the scientist (or your client) to come to you with the problem, interpret the scientific lingo so that you can understand what is being done, state for you the statistical question in which he is interested, and finally take the results of your statistical tests and go away.



The problem with this approach is that you become nothing but a “computing machine”—a technician. You really contribute nothing to the process that couldn’t be done with a good computer program. You are not only replaceable, but your position may soon be considered disposable. You never really become part of the research team. And, further, you bring no credit to the field of statistics.

One of the more common complaints from employers is that the statistician does not understand the science or the process. This was not as much of a problem in the earlier days of statistics because most trained statisticians were experts in some field before they became statisticians and then they went back

to work in that original field. Such cases are rare these days. The dominant field from which statistics students come is mathematics, and many will have had only limited exposure to the science or engineering field in which they end up applying their statistical expertise.

Clearly, the newly trained statistician cannot be expected to be literate in all possible fields of application in which he might be employed, but there is an important attitude that can be imparted. It is the attitude that you are the missionary taking statistical methods to the field. It is the attitude that you will get to know and understand the science or the process and the lingo that goes with it. It is the attitude that you will go to the scientist and

interpret the statistics for him/her, rather than expecting him/her to learn the statistics. It is this willingness to understand the science that will set you apart and eventually make you an indispensable member of the team, not just a technician. Your familiarity with the area of application will lead you to see new applications of statistics and new statistical methods that the scientist would not have imagined. It is this attitude that will make your statistical career exciting.

And so, in summary, your degrees open the doors for great opportunities. Make the most of them by keeping abreast of your field, protecting your integrity, and making yourself an indispensable member of the team. ■

## Save the Date

The ASA announces the inaugural  
**Conference on Statistical Practice**  
*Innovations and Best Practices for the Applied Statistician*

February 16-18, 2012, Orlando, Florida

Statistical Practice 2012 aims to bring together hundreds of statistical practitioners—including data analysts, researchers, and scientists—who engage in the application of statistics to solve real-world problems on a daily basis. The conference will provide an opportunity to learn about the latest statistical methodologies and best practices in statistical design, analysis, programming, and consulting.

For more information, visit [www.amstat.org/meetings/csp/2012](http://www.amstat.org/meetings/csp/2012).





# Preparing for **MIAMI** *JSM Chair Prerogatives*

Dave Judkins, JSM 2011 Program Chair

**I**t has been an exciting year preparing for the Joint Statistical Meetings that will take place in Miami Beach from July 30 to August 4. I have been ably assisted not just by the elected section and society chairs, but also by friends who agreed to work as General Methodology chairs and the poster chair. Andrew Gelman of Columbia University and Brian Wiens of Alcon Labs are the General Methodology chairs. Benmei Liu of the National Cancer Institute is the poster chair.

Andrew arranged all the introductory overview lectures for 2011, while Brian arranged the late-breaking sessions and Benmei invited posters and organized all the posters. In addition, Brian, Andrew, and I all organized General Methodology sessions that match our interests. My personal favorite, of course, is a session I organized about value-added assessments of teachers. We honor Deming each year. What would he have had to say in this area where presidents George W. Bush and Barack Obama are in substantial agreement?

These sessions are open to all registered attendees. So, reserve your flights, pack your bags, and join us at JSM in Miami Beach.

**Introductory overview lectures.** Political arguments and political representation often rely on statistics, whether it's counting votes, measuring public opinion, or assessing the effects of policies. Sunday afternoon, Andrew will discuss how models of political behavior can be improved by moving toward a more data-based perspective.

Evidence-based medicine has the potential to transform health care, to focus resources on what works and what works best for individual people. Monday morning, Chris Schmid will discuss some of the statistical tools that can make this happen.

Data visualization lives at the intersection of science, graphic design, and online journalism. Tuesday morning, Dianne Cook will take us from the fundamentals of information display to the future of dynamic graphics.

Statistics is central to understanding gene mapping and gene expression. Wednesday morning, Cavan Reilly will talk about the technical challenges involved in moving from data to genes to learning about genetic variation relating to disease.

**Posters.** More than 350 posters (including invited, topic-contributed, and contributed) will be presented at JSM 2011. They will spread across five sessions from August 1 at 10:30 a.m. to August 3 at 12:20 p.m. One Data Expo competition and one Statistical Significance competition will take place for pre-entered posters. August 1 at 10:30, nine select invited posters will be presented.

**Late-breaking sessions.** There will be two late-breaking sessions for JSM 2011. Late-breaking sessions are for timely topics that are of interest to the statistics community, especially for topics that could not have been developed into sessions when

## Overview of Chair's Sessions for JSM 2011

**IOL:** Mathematics, Statistics, and Political Science

**IOL:** Statistics and Evidence-Based Medicine

**Late-Breaker:** Heritage Health Prize

**Andrew's Choice:** Advances in Modeling Nontraditional Network Data

**Benmei's Choice:** Invited Posters

**Dave's Choice:** What Would Deming Have Said About Value-Added?

**Andrew's Choice:** Controversies in the Philosophy of Bayesian Statistics

**IOL:** Statistical Graphics

**Brian's Choice:** Complex and Massive Multiple Testing Problems

**Late-Breaker:** Supreme Court Finds Statistical Significance Is Not Necessary for Causation

**IOL:** An Overview of Current Problems in Statistical Genetics

the other invited session proposals were submitted in September 2010.

The first late-breaking session will take place August 1 at 10:30 a.m. This session will describe the Heritage Health Prize, a competition with a \$3.5 million award for the best prediction of hospital admission based on historical claims data. The competition opened April 4 and the entry deadline is April 4, 2013. The session will introduce the competition, describe the objectives of the competition, and discuss modern statistical approaches that may be useful for modeling the available data.

The second late-breaking session will take place on August 3 at 8:30 a.m. This session will discuss a recent United States Supreme Court decision to use the lack of statistical significance to justify nondisclosure of data by a publicly traded company when those data are nonpublic and potentially material. The legal and statistical rationale and business impact will make this session of interest to statisticians from many specialties.

Visit the online program at [www.amstat.org/meetings/jsm/2011/onlineprogram](http://www.amstat.org/meetings/jsm/2011/onlineprogram) for updated times and locations. ■



**A. John Bailer**, ASA Board of Directors representative from the Council of Sections and distinguished professor and chair of statistics at Miami University, was awarded the university's Benjamin Harrison Medallion during the May 7 commencement ceremony.

Miami's Benjamin Harrison Medallion is presented to members of Miami's faculty or staff who have made outstanding national contributions to education.

Bailer has been recognized for excellence in teaching, research, and service at Miami with

other awards such as the 2009 Distinguished Teaching Award for Excellence in Graduate Instruction and Mentoring and 2005 Distinguished Scholar of the Graduate Faculty.

Visit the Miami University website at [www.miami.muohio.edu/news/article/view/15223](http://www.miami.muohio.edu/news/article/view/15223) to read more about Bailer and the Harrison Medallion. ■

### Montserrat "Montse"

**Fuentes** was recently named head of the department of statistics at North Carolina State University, effective July 1. She replaces ASA President Sastry Pantula, who vacated the position to serve as director of the National Science Foundation's Division of Mathematical Sciences in the Mathematical and Physical Sciences Directorate.

Fuentes currently serves on the Institute of Mathematical Science Council, as a scientific adviser to the Environmental Protection Agency's Integrated Human Exposure Committee, and as the U.S. representative on the board of directors of the International Environmetrics Society.

In an email to faculty and staff in the department, Dan Solomon, dean of the College of Physical and Mathematical Sciences, noted, "Montse brings excellent academic credentials and has the vision, determination, and dedication to lead."

Fuentes was elected Fellow of the American Statistical Association in 2008 and is the editor of the *Journal of Agricultural, Biological, and Environmental Statistics*, a publication of the ASA and International Biometric Society. ■

The Washington Statistical Society (WSS) and RTI International recently announced that **Nilanjan Chatterjee**, senior investigator and chief of the biostatistics

branch at the National Cancer Institute, was chosen as this year's recipient of the Gertrude M. Cox Award.

Since earning his PhD in statistics from the University of Washington in 1999, Chatterjee has made noteworthy contributions to developing study designs and statistical methods for modern epidemiologic studies, in high-impact studies, and in gene-environment interactions and genome-wide association studies. He will receive the award at the WSS annual dinner meeting on June 16 and will give the keynote address, "Estimating the 'Known-Unknowns' from 'Known-Knowns' in the Search for Missing Heritability of Complex Traits."

The award was named in memory of Gertrude Cox and established in 2003 through a joint agreement between WSS and RTI to recognize statisticians in early to mid-career who have made significant contributions to statistical practice. ■

In conjunction with the ASA Section on Nonparametric Statistics, the *Journal of Nonparametric Statistics* recently awarded two prizes for best papers.

### Anneleen Verhasselt

was the winner of the 2010 Best Student Paper Award for co-authoring "Regularization and P-splines in Generalized Linear Models" with Irène Gijbels.

**Raymond J. Carroll**, **Xiahong Chen**, and **Yingyao Hu** won the 2010 Best Paper Award for "Identification and Estimation of Nonlinear Models Using Two Samples with Nonclassical Measurement Errors."

Visit the *Journal of Nonparametric Statistics* website at [www.tandf.co.uk/journals/journal.asp?issn=1048-5252&linktype=offers](http://www.tandf.co.uk/journals/journal.asp?issn=1048-5252&linktype=offers) to view the papers. ■

## The Council of Texas Statisticians (COTS)

The Council of Texas Statisticians (COTS) sponsored an award at the ExxonMobil Texas Science and Engineering Fair (EMTSEF), held in San Antonio, Texas, at the Henry B. Gonzales Convention Center on April 2. The award was for the best use of statistics in a science project. A team of judges from the San Antonio Chapter of the American Statistical Association helped select three senior high-division projects that showed excellence in the use and knowledge of statistical methods.

First place and \$125 were awarded to Amy Robinson, from Keystone High School in San Antonio, for her project, "Astronomical Image Processing: Eliminating Random Atmospheric Noise and Enhancing Low-Resolution Images (Year III)." Second place and \$100 were awarded to Bhas Karan Nair, from Plano High School in Plano, for his project, "Genome Signature and the Origin of Life." Third place and \$75 were awarded to Sai Gourisnagar, from Robert L. Paschal High School in Fort Worth, for his project, "Novel Mathematical Characterizations of the One-Dimensional, Self-Gravitating System."

Visit <http://magazine.amstat.org/blog/2011/05/18/cotsjun11> to view a photo of the volunteer judges.

## Obituaries

### Thomas R. Ten Have

Thomas Ten Have, a professor in the division of biostatistics of the Center for Clinical Epidemiology and Biostatistics at the University of Pennsylvania, passed away May 1.

A member of the American Statistical Association, Institute of Mathematical Statistics, International Biometrics Society, Society for Epidemiological Research, and American Public Health Association, he also was associate editor for *Biometrics* and associate editor for the *Journal of the Royal Statistical Society, Series C*.

In lieu of flowers, donations in Ten Have's memory can be made to Philadelphia Futures at [www.philadelphiafutures.org](http://www.philadelphiafutures.org), Philadelphia Collaborative Violence Prevention Center at [www.chop.edu/service/phila-collaborative-violence-prevention-center](http://www.chop.edu/service/phila-collaborative-violence-prevention-center), or ACHIEVEability at [www.achieveability.org](http://www.achieveability.org).

### Elizabeth May

Elizabeth May, former acting president at Wheaton College in Norton, Massachusetts, died on March 27 after a long illness. She was 103.

May was a member of Phi Beta Kappa, the American Economic Association, the American Statistical Association, and the Society for International Development.

### J. Laurie Snell

*Submitted by Dan Rockmore*

J. Laurie Snell, ASA Fellow and Benjamin Cheney Professor of Mathematics Emeritus at Dartmouth College, passed away on March 19 at the age of 86.

Snell taught at Dartmouth College for 51 years and was an inspiration and friend to many mathematicians and statisticians. He was widely known for an outstanding body of research in probability and its applications in the social sciences, exemplary expository writing, and curricular innovation and inspirational leadership as a teacher of probability and statistics extending five decades.

Snell earned his PhD in mathematics from the University of Illinois under the direction of J. L. Doob and was a Fine Instructor at Princeton University before being recruited to Dartmouth by John Kemeny. With that, he began a long and fruitful collaboration and friendship with Kemeny, which produced, among many other things, two classic textbooks, *Introduction to Finite Mathematics* and *Finite Markov Chains*.

Snell was widely known for introducing new technologies into teaching, from the significant use of BASIC in Introduction to Probability to what was, at the time, a revolutionary use of the Web in his distribution of the widely read *Chance News*, initiated in 1992 as a monthly newsletter containing interesting exegeses of statistically relevant news items. Before passing away, Snell migrated *Chance News* to wiki format and it is now available at [www.causeweb.org/wiki/chance](http://www.causeweb.org/wiki/chance). While many thought *Chance News* must have had a full staff behind it, it was, in fact, mainly the product of Snell's tireless efforts. His energy, friendship, and intellect will be missed.

### Joseph Steinberg

*Submitted by Seth Steinberg*

Joseph Steinberg, 91, of Gaithersburg, Maryland, died at Holy Cross Hospital in Silver Spring, Maryland, on April 9 due to complications suffered from a fall.

A DC-area resident since 1940, Steinberg served for many years as a high-ranking statistician in several federal government agencies. He was born in New York City on March 22, 1920, and graduated from Evander Childs High School in Bronx, New York, in 1935. He graduated Phi Beta Kappa from City College of New York with a degree in mathematics in 1939.

In 1940, Steinberg began to work at the U.S. Census Bureau as a statistician and, following a two-year position at the Social Security Administration, spent the next 19 years at the Census Bureau, where he served for several years as director of the Statistical Methods Division. In 1963, he returned to the Social Security Administration as chief mathematical statistician. In 1972, he joined the Bureau of Labor Statistics as an assistant commissioner, a position he held until his retirement from the federal government in 1975.

After his time in the government, Steinberg formed a consulting firm, Survey Design, Inc., for which he served as president until 1995. In addition, from the early 1940s until 1974, he taught a course on survey sampling each semester at the USDA Graduate School. He was a Fellow of the American Statistical Association.

Survivors include his wife of 61 years, Ruth (Cohen) Steinberg of Gaithersburg; his son, Seth (Terry) of North Potomac; and his grandchildren, Michelle and David of North Potomac. He was preceded in death by a son, Steven.

## Raymond J. Carroll Young Investigator Award



Carroll

Nominations for the 2011 Raymond J. Carroll Young Investigator Award will be accepted until August 15. This award is presented biannually by the department of statistics at Texas A&M University to an outstanding young researcher in statistical science. Candidates must have completed their PhD within the previous 10 years and demonstrated outstanding scholarly contributions in statistical methodology and applications. Nominations must be written and include a curriculum vita and supporting documents, such as letters of recommendation. Self-nominations are encouraged.

Electronic nominations are preferred and can be sent to Jeff Hart at [hart@stat.tamu.edu](mailto:hart@stat.tamu.edu) or Texas A&M University, Department of Statistics, 3143 TAMU, College Station, TX 77843-3143. ■

### Looking for a Job?

Visit the ASA JobWeb—a targeted job database and résumé-posting service.

[www.amstat.org/jobweb](http://www.amstat.org/jobweb)



## 9th International Conference on Health Policy Statistics

**October 5–7  
The Ritz-Carlton  
Cleveland, Ohio**

Focusing on advancing methods to improve health care through various studies and the quantitative analysis of data, ICHPS offers:

- Invited and contributed sessions
- Workshops intended to provide research training and career development in the methods, resources, and applications at the forefront of contemporary health policy research

See [www.amstat.org/meetings/ichps/2011](http://www.amstat.org/meetings/ichps/2011) for details.

Organized by the Health Policy Statistics Section of the American Statistical Association



# CHANCE

## The Magazine Just Keeps Getting Better



### The Statistics Forum

The American Statistical Association and *CHANCE* now bring you “**The Statistics Forum**,” a blog that provides everyone the opportunity to participate freely in discussions about probability and statistics and the role they play in important and interesting topics.

#### **CHANCE** online also includes:

- A fresh new design
- The ability to leave comments about articles
- An easy-to-use search feature
- Archived articles and columns



Check out *CHANCE* today online at <http://chance.amstat.org> or log in to ASA Members Only for full access.

**Not currently a subscriber? Start your subscription today.**  
ASA members pay only \$30 a year.

# sectionnews

## Biometrics

The Biometrics Section will offer two continuing education courses and six invited sessions during the Joint Statistical Meetings in Miami Beach, Florida. Check the JSM 2011 online program at [www.amstat.org/meetings/jsm/2011/onlineprogram](http://www.amstat.org/meetings/jsm/2011/onlineprogram) for updates on locations and times.

Invited session ideas also are welcome for the ENAR 2012 meeting, to take place April 1–4 in Washington, DC. Send your ideas to ENAR 2011 program chair, Jason Fine, at [jfine@bios.unc.edu](mailto:jfine@bios.unc.edu).

The section also needs ideas for JSM 2012 invited sessions, to take place July 28 to August 2 in San Diego, California. Ideas can be emailed to JSM 2011 program chair, Tianxi Cai, at [tcai@hsph.harvard.edu](mailto:tcai@hsph.harvard.edu). Submit ideas for short courses to continuing education chair, Annie Qu, at [anniequ@illinois.edu](mailto:anniequ@illinois.edu).

## Biopharmaceutical

The Biopharmaceutical Section and the NY/NJ Metropolitan Section of the American Society for Quality are cosponsoring the 67th Annual Deming Conference on Applied Statistics, to be held December 5–9 at the Tropicana Casino Hotel and Resort in Atlantic City, New Jersey. The meeting is a three-day conference followed by two parallel two-day short courses. Registration opens August 1.

Experts from academia, government, and industry will give 12 half-day tutorials on topics such as the following:

Data Monitoring Committees: Areas of Consensus and Controversy

Interpreting Changes, Responder Analyses, and Statistical Considerations for Patient-Reported Outcomes

Management of Regulatory Data Standards

Group Sequential Design of Clinical Trials

Comparing Groups: Randomization and Bootstrap Methods Using R

Clinical Prediction Models

An Introduction to Adaptive Designs with Applications to Clinical Trials

The two-day short courses are Modeling Survival Data: Extending the Cox Model, led by Terry M. Therneau, and Novel Approaches to Multiple Test Problems, with Applications to Adaptive Designs, led by Frank Bretz, Willi Maurer, and Jeff Maca.

All related books will be offered at the conference with significant discounts. Details can be found at [www.demingconference.com](http://www.demingconference.com).

## Statistics and the Environment

Members are invited to join the section's business meeting and mixer, tentatively scheduled for August 2 at JSM 2011 in Miami Beach, Florida.

In addition to the five invited sessions and two roundtables announced in the May issue of *Amstat News*, ENVR is sponsoring several topic-contributed sessions. For details, visit the JSM online program at [www.amstat.org/meetings/jsm/2011/onlineprogram](http://www.amstat.org/meetings/jsm/2011/onlineprogram).

The section also requests topics for JSM 2012 invited sessions. Submit ideas by email to ENVR Program Chair Jarrett Barber at [Jarrett.Barber@asu.edu](mailto:Jarrett.Barber@asu.edu). For detailed section news, visit <http://magazines.amstat.org/?cat=17>.

To view section news in its entirety, visit <http://magazine.amstat.org>.

To list your sections' news in *Amstat News*, send an email to managing editor Megan Murphy at [megan@amstat.org](mailto:megan@amstat.org) with the details.

## Government Statistics Section

Have you started planning for the 2011 meetings in Miami Beach, Florida? The Government Statistics and Social Statistics sections offer the following 10 suggestions to help you get the most out of your JSM experience:

- Prepare ahead of time
- Be informed
- Plan your schedule in advance
- Know your section's sessions
- Know your section's activities
- Meet the section officers
- Express your opinion
- Find out what your association is doing
- Do something new
- Make your travel plans

For details, visit <http://magazine.amstat.org/?cat=17>.

## Quality and Productivity

The Section on Quality and Productivity (Q&P) has an exciting line-up of five contributed and four topic-contributed sessions scheduled for the 2011 Joint Statistical Meetings. For details, visit <http://magazine.amstat.org/?cat=17> or check out the JSM 2011 online program at [www.amstat.org/meetings/jsm/2011/onlineprogram](http://www.amstat.org/meetings/jsm/2011/onlineprogram).

## Statistical Programmers and Analysts

The Section for Statistical Programmers and Analysts (SSPA) has a great program planned for JSM 2011. Topics of interest to statistical programmers include presentations and discussions on R and SAS programming, Bayesian methodology, and CDISC. The section is sponsoring or cosponsoring two continuing education courses, one invited

session, two topic-contributed sessions, four contributed sessions, and four roundtable discussions. Also, members are invited to the section's annual business meeting, which will showcase what the SSPA has to offer.

New to the section's program this year is the "Hindsight Is 20-20" poster competition. Contestants will present posters highlighting a difficult programming obstacle and detailing the solution(s) devised to overcome the challenge.

Visit the online program at [www.amstat.org/meetings/jsm/2011/onlineprogram](http://www.amstat.org/meetings/jsm/2011/onlineprogram) for session descriptions, locations, and times. To read the complete section news, visit <http://magazine.amstat.org/?cat=17>.

## Survey Research Methods Section

The ASA Survey Research Methods Section (SRMS) will sponsor or cosponsor more than 50 sessions at the 2011 Joint Statistical Meetings in Miami Beach, Florida. These sessions include invited papers and panels, topic-contributed papers and panels, and contributed papers. In addition, SRMS is cosponsoring poster sessions. For a full listing of all SRMS-sponsored sessions, visit the JSM 2011 online program at [www.amstat.org/meetings/jsm/2011/onlineprogram](http://www.amstat.org/meetings/jsm/2011/onlineprogram). To view section news in its entirety, visit <http://magazine.amstat.org/?cat=17>.

# chapternews

## San Antonio Chapter

The 2011 Don Owen Award was presented to Dennis K. J. Lin by John Schoolfield, chapter president, on March 25 during the Conference of Texas Statisticians. Zhiliang Ying of the department of statistics at Columbia University nominated Lin.

Details about Lin's career and the Don Owen Award can be found at <http://magazine.amstat.org/blog/category/membernews>. ■



The following events are the latest additions to the ASA's online calendar of events. Announcements are accepted from education and not-for-profit organizations only. To view the complete list of statistics meetings and workshops, visit [www.amstat.org/dateline](http://www.amstat.org/dateline).

\* Indicates events sponsored by the ASA or one of its sections, chapters, or committees

## 2011

### July

#### **5–7—Leeds Annual Statistical Workshop 2011 (LASR 2011), Leeds, United Kingdom**

For more information, visit [www.maths.leeds.ac.uk/lasr2011](http://www.maths.leeds.ac.uk/lasr2011) or contact Jochen Voss, Department of Statistics, University of Leeds, Woodhouse Lane, Leeds, International LS2 9JT, United Kingdom; +44 113 3435125; [workshop@maths.leeds.ac.uk](mailto:workshop@maths.leeds.ac.uk).

### September

#### **5–9—Epidemiological Methods and Analysis, Prague, Czech Republic**

For more information, visit [www.ucl.ac.uk/epidemiology/students](http://www.ucl.ac.uk/epidemiology/students) or contact Hynek Pikhart, 1-19 Torrington Place, London, International WC1E 6BT, United Kingdom; +44 (0)20 76791906; [h.pikhart@ucl.ac.uk](mailto:h.pikhart@ucl.ac.uk).

#### **\*19–21—2011 FDA/ Industry Statistics Workshop, Washington, DC**

For more information, visit [www.amstat.org/meetings/fdaworkshop](http://www.amstat.org/meetings/fdaworkshop) or contact Cheryl Behrens, 732 N. Washington St., Alexandria, VA 22314; (703) 684-1221; [cheryl@amstat.org](mailto:cheryl@amstat.org).

### October

#### **12–14—Conference on Risk Assessment and Evaluation of Predictions, Silver Spring, Maryland**

For information, visit <http://brac.umd.edu/~Risk2011/Main.htm> or contact Mei-Ling Ting Lee, 2234R SPH Building, Department of Epidemiology and Biostatistics, College Park, MD 20742; (301) 405-4581; [mltlee@umd.edu](mailto:mltlee@umd.edu).

#### **13–14—Operations Research Society of Eastern Africa 2011 Conference, Nairobi, Kenya**

For details, visit [www.orsea.net](http://www.orsea.net) or contact Gituro Wainaina, Kenya's Vision 2030 Delivery Secretariat, Nairobi, International, Kenya; [wainainagituro@vision2030.go.ke](mailto:wainainagituro@vision2030.go.ke).

#### **20–21—Emerging Methodological Issues in Population-Based Chronic Disease Research, Seattle, Washington**

For more information, visit [www.prenticesymposium.org](http://www.prenticesymposium.org) or contact Noelle Noble, 1100 Fairview Ave. North, M2-B500, Seattle, WA 98109; (206) 667-4147; [nnoble@fhcrc.org](mailto:nnoble@fhcrc.org).

#### **31–11/4—53rd Annual Conference of the South African Statistical Association, Pretoria, South Africa**

For information, visit [www.sastat.org.za](http://www.sastat.org.za) or contact Sonali Das, Buildign 2A, CSIR, P.O. Box 395, Pretoria, International 0001, South Africa; 0027128413713; [sdas@csir.co.za](mailto:sdas@csir.co.za).

### December

#### **12–16—AIM Workshop: Singular Learning Theory, Connecting Algebraic Geometry, and Model Selection in Statistics, Palo Alto, California**

For details, visit [www.aimath.org/ARCC/workshops/modelselection.html](http://www.aimath.org/ARCC/workshops/modelselection.html) or contact Estelle Basor, 360 Portage Ave., Palo Alto, CA 94306; (650) 845-2072; [ebasor@aimath.org](mailto:ebasor@aimath.org).

## 2012

### January

#### **1–6—22nd Annual Conference of the International Environmetrics Society, Hyderabad, India**

For more information, visit [www.ties2012.com](http://www.ties2012.com) or contact Subba Rao Tata, Department of Mathematics, University of Manchester, Manchester, International M60 1QD, UK; 44 161 200 3664; [tata.subbarao@googlemail.com](mailto:tata.subbarao@googlemail.com). ■

To view the entire list of statistics meetings and workshops, visit [www.amstat.org/dateline](http://www.amstat.org/dateline).

## Florida

■ The department of statistics at Florida State University invites applications for a one-year teaching position starting August 2011. Please see <http://stat.fsu.edu/position/TeachingPosition.php> for info on how to apply. Florida State University is an Equal Opportunity/Access/Affirmative Action Employer.

## New York

■ Assistant Professors, Department of Biostatistics, Columbia University Mailman School of Public Health. Required: doctoral degree in biostatistics or statistics, strong record of independent and collaborative research and teaching, excellent communication skills. Desirable: statistical informatics, functional data analysis, statistical methods for complex adaptive systems, aging, life course processes, environmental data. For more information, see and apply here: <https://academicjobs.columbia.edu/applicants/jsp/shared/frameset/Frameset.jsp?time=1300226460146> academicjobs.columbia.edu/applicants/jsp/shared/frameset/Frameset.jsp?time=1300226460146. Columbia University is an equal opportunity employer.

■ Winthrop-University Hospital seeks senior biostatistician for Biostatistics & Epidemiology Consultation Unit. Requires doctorate in statistics or biostatistics, experience in medical research, grant preparation, collaboration w/clinical investigators, scientists, scholarly publications that would support an associate professor or professor appointment at Stony Brook Medical School. Replies to: Donald Brand, PhD, Office of Health Outcomes Research, Winthrop-University Hospital, 222 Station Plaza North, Suite 300, Mineola, NY 11501. Email: [outcomes@winthrop.org](mailto:outcomes@winthrop.org). EOE.

## Oregon

■ Electrical Geodesics, Inc. seeks to hire a statistician for our company in Eugene, OR. Successful candidate will be responsible for developing new signal analysis

Professional Opportunity listings may not exceed 65 words, plus equal opportunity information. The deadline for their receipt is the 20th of the month two months prior to when the ad is to be published (e.g., May 20 for the July issue). Ads will be published in the next available issue following receipt.

Listings are shown alphabetically by state, followed by international listings. Vacancy listings may include the institutional name and address or be identified by number, as desired.

Professional Opportunities vacancies also will be published on the ASA's website ([www.amstat.org](http://www.amstat.org)). Vacancy listings will appear on the website for the entire calendar month. Ads may not be placed for publication in the magazine only; all ads will be published both electronically and in print.

**Rates:** \$320 for nonprofit organizations (with proof of nonprofit status), \$475 for all others. Member discounts are not given. For display and online advertising rates, go to [www.amstat.org/ads](http://www.amstat.org/ads).

Listings will be invoiced following publication. All payments should be made to the American Statistical Association. All material should be sent to *Amstat News*, 732 North Washington Street, Alexandria, VA 22314-1943; fax (703) 684-2036; email [advertise@amstat.org](mailto:advertise@amstat.org).

Employers are expected to acknowledge all responses resulting from publication of their ads. Personnel advertising is accepted with the understanding that the advertiser does not discriminate among applicants on the basis of race, sex, religion, age, color, national origin, handicap, or sexual orientation.

Also, look for job ads on the ASA website at [www.amstat.org/jobweb](http://www.amstat.org/jobweb).

## The Johns Hopkins Bloomberg School of Public Health Department of Epidemiology

### SENIOR BIOSTATISTICIAN

The Department of Epidemiology, Johns Hopkins Bloomberg School of Public Health seeks a biostatistician to work as part of a data coordinating center study team and collaborate with epidemiologists, statisticians, project coordinators and investigators in a variety of fields to analyze and manage data with the aim of scientific publication. The successful applicant will contribute to the development and application of statistical methods to address research needs in a long-term, nationwide cohort study of kidney disease in children and a clinical trial of cardiovascular imaging in the Division of Cardiology of the Johns Hopkins School of Medicine.

Applicants must have a Masters Degree in Biostatistics, Epidemiology, Public Health or related discipline and research experience is preferred. A strong background in statistical principles and data analysis are required with knowledge of Stata, SAS, S-plus or R. Opportunities to present work and coauthor publications in statistical and substantive journals necessitate excellent oral and written communication skills. Experience with manuscript and presentation preparation is desirable. The individual will be responsible for multiple initiatives and must be self directed and able to work efficiently.

Start date is flexible; a successful applicant may commence work as early as July 1st, 2011 and preferable before September 1st, 2011. For more detailed job description please go to our website at <http://jobs.jhu.edu> and apply online. Please select job number 47941 to apply. We offer a competitive salary and we have an excellent benefit program, including tuition remission and tuition grant for dependents. The successful candidate for this position will be subject to a pre-employment background check.

Johns Hopkins University is an EO/AA employer committed to recruiting, supporting, and fostering a diverse community.

A graphic on the left side of the page features two silhouettes of people. The top silhouette is a person in a dark blue shirt, holding a video camera up with their right arm. The bottom silhouette is a person in a light blue shirt, also holding a video camera. The background of the entire page is light blue with a white rectangular area containing the text.

# 2011 ASA VIDEO COMPETITION

## “Promoting the Practice and Profession of Statistics”

The American Statistical Association invites submissions of original digital videos that celebrate the many and varied achievements and roles of statisticians.

All submissions must be the original design and creation of the entrants and must not infringe upon anyone's copyright protections (see [www.youtube.com/t/howto\\_copyright](http://www.youtube.com/t/howto_copyright) for copyright guidelines).

The deadline for submission of videos is **JULY 15, 2011**.

Each entry will be judged on two equally weighted criteria: quality of statistical content and entertainment value.

Submissions are limited to five minutes in length.

**Cash prizes** will be awarded to the winning entries. First place: \$1,000; second place: \$350; third place: \$150.

All student entrants for the first-, second-, and third-place winning videos will be offered a one-year student membership to the ASA.

In submitting a video, entrants agree that the video may be displayed by the ASA, featured in its publications, and included on its website.

Winners will be announced at the Joint Statistical Meetings to be held in Miami, Florida, July 30 through August 4, 2011. Entrants need not be present to win.

A completed online entry form must be submitted with every entry. Please contact Tom Short ([tshort@jcu.edu](mailto:tshort@jcu.edu)) to receive a code that will permit you to upload your video to the competition's YouTube site.

Members of the ASA 2011 Public Awareness Workgroup will serve as judges for the competition. Decisions by the judges are final.

Links to sample videos and instructions for how to submit entries are available at [www.amstat.org/youtube](http://www.amstat.org/youtube).

Members of the American Statistical Association's 2011 Public Awareness Workgroup, ASA employees, ASA directors, and their immediate family members are ineligible to receive awards in the competition.



## Survey Sampling Statistician

EOE

Westat is an employee-owned corporation headquartered in the suburbs of Washington, DC (Rockville, Maryland). We provide statistical consulting and survey research to the agencies of the U.S. Government and to a broad range of business and institutional clients. With a strong technical and managerial staff and a long record of quality research, Westat has become one of the leading survey research and statistical consulting organizations in the United States.

Our company was founded in 1961 by three statisticians. The current staff of more than 2,000 includes over 60 statisticians, as well as research, technical, and administrative staff. In addition, our professional staff is supported by data collection and processing personnel situated locally and in field sites around the country. The work atmosphere is open, progressive, and highly conducive to professional growth.

Our statistical efforts continue to expand in areas such as the environment, energy, health, education, and human resources. Westat statisticians are actively involved in teaching graduate-level courses in statistical methods and survey methodology in collaborative arrangements with area colleges and universities.

We are currently recruiting for the following statistical position:

### Survey Sampling Statistician

Job Code DRM/3233BR

Position available for a survey sampling statistician with 3 or more years of relevant experience. Responsibilities include sample design and selection, power calculations, frames development, weighting including nonresponse adjustment and benchmarking, imputation, and variance estimation. Must have a master's or doctoral degree in statistics and have very good writing skills. Coursework in sample survey design is highly desirable.

Westat offers excellent growth opportunities and an outstanding benefits package including life and health insurance, an Employee Stock Ownership Plan (ESOP), a 401(k) plan, flexible spending accounts, professional development, and tuition assistance. To apply, go to [www.westat.com/jobs](http://www.westat.com/jobs) and enter **3233BR** in the space provided.



An Employee-Owned  
Research Corporation®

algorithms for artifact suppression and source estimation. Mail resume to: Electrical Geodesics, Inc., 1600 Millrace Drive Ste. 307, Eugene OR 97403, ATTN: Denise Marquez, REF 7962. EOE.

### Texas

■ **PhD Statistician.** Assistant professor to work in the Center for Clinical and Translational Sciences (CCTS) (Houston CTSA Program) at The University of Texas Health Science Center at Houston (UTHSC-H). All areas of statistics are considered. Interested candidates should send copies of their transcripts, CV, and names and contact information for three references to Dr. M. H. Rahbar, Director, Biostatistics/Epidemiology/Research Design Core, CCTS, UTHSC-H, via [Mohammad.H.Rahbar@uth.tmc.edu](mailto:Mohammad.H.Rahbar@uth.tmc.edu). The University of Texas Health Science Center at Houston is an EO/AA employer. M/F/D/V. This is a security sensitive position and thereby subject to Texas Education

*continued on p. 45*



### Better. Together.™

At Capital One®, we're looking for a few bold intellectuals who aren't afraid to drive breakthrough innovation and challenge conventional thinking. Are you ready to make your mark? If so, we've got a place for you.

Our Statisticians influence strategy for one of the largest banks in the U.S. Here, you'll find a dynamic, challenging and collaborative environment. Capital One provides diversified financial services products in a fast-changing market. To manage the risks and reap the rewards, we need your unique mix of talents, insights and passions.

**Now hiring Statisticians in the following locations:** Richmond, Virginia · McLean, Virginia · Plano, Texas

[www.capitalone.com/careers](http://www.capitalone.com/careers)

We are an equal opportunity employer committed to diversity in the workplace. We promote a drug-free work environment. If you require an accommodation to apply for a U.S. employment opportunity, please contact Recruiting at 1-800-304-9102.



# Looking for a **JOB?**

## Let the ASA help you realize your professional goals.

**JobWeb**—The ASA JobWeb is a targeted job database and résumé-posting service  
[www.amstat.org/jobweb](http://www.amstat.org/jobweb)

**JSM Career Placement Service**—  
A full-service recruiting facility held annually at JSM, with hundreds of statistical employers seeking qualified applicants  
[www.amstat.org/meetings/jsm](http://www.amstat.org/meetings/jsm)

**Amstat News**—The ASA's monthly membership magazine, which features notices of employment opportunities in each issue



*Promoting the Practice and Profession of Statistics*

## **VCU** Medical Center Virginia Commonwealth University

### Department of Biostatistics Assistant Professor Position #F3317

The Department of Biostatistics at Virginia Commonwealth University (VCU) is recruiting for a tenure-eligible assistant professor position. Focus in any methodological/application area is welcome, including but not limited to: statistical genomics, cancer epidemiology, clinical trials, bioinformatics, spatial data analysis, mixed effects models, survey sampling methodology or Bayesian methodology. Candidates will be expected to maintain extramural grant support, teach and advise graduate students, and provide departmental and university service.

The VCU Department of Biostatistics consists of 15 full-time faculty at the Assistant Professor level or higher and offers both M.S. and Ph.D. programs in biostatistics, including a concentration in Genomic Biostatistics and a M.S. in Clinical Research and Biostatistics Concentration. In addition to other computational resources at VCU, our department supports its own high-performance computing cluster.

All candidates should have demonstrated experience working in and fostering a diverse faculty, staff, and student environment or commitment to do so as a faculty member at VCU. Potential candidates can submit applications, including a statement of research, teaching philosophy, curriculum vitae and contact information for three professional references, via mail - to Mrs. Yvonne Hargrove, Department of Biostatistics, Virginia Commonwealth University, P.O. Box 980032, Richmond, VA 23298-0032 - or by e-mail to [yfhargro@vcu.edu](mailto:yfhargro@vcu.edu).

## TRAVELERS

Statisticians play a major role in Travelers' core business by identifying pricing and redistributing risk. They also lead major work in general business functions such as marketing and operations.

### Statistician Career Opportunities

Our work spans the full range of statistical responsibilities including:

- Problem selection, simplification and prioritization
- Data identification, structuring and cleaning

- Statistical modeling using a wide-range of standard, advanced and research-level techniques
- Implementation, performance tracking and rapid-cycle improvement

Statisticians at all career stages are invited to apply.

For more information contact Bill Kahn, VP of Analytics, at [wkahn@travelers.com](mailto:wkahn@travelers.com) or go to our website: [travelers.com/Careers](http://travelers.com/Careers).

Travelers is an equal opportunity employer. We actively promote a drug-free workplace. © 2010 The Travelers Indemnity Company. All rights reserved.



# Come to your Census

Join the Census Bureau to help produce quality data that enable Americans to better understand our country - its population, resources, economy, and society.

## Your work as a Mathematical Statistician at the Census Bureau

- Design sample surveys and analyze the data collected.
- Design and analyze experiments to improve survey questionnaires and interview procedures.
- Improve statistical methods for modeling and adjustment of seasonal time series.
- Perform research on statistical methodology that will improve the quality and value of the data collected.
- Publish research papers and technical documentation of your work.

## Requirements

- U.S. citizenship
- Bachelor's, Master's or Ph.D with at least 24 semester hours in math and statistics (see website for more specifics on required coursework)

Apply at [www.census.gov](http://www.census.gov), click on Jobs@census, Headquarters and NPC Employment Opportunities, Mathematical Statistician

**The U.S. Census Bureau is an Equal Opportunity Employer.**

Code § 51.215. A background check will be required for the final candidate.

## Utah

■ The Study Design and Biostatistics Center in the University of Utah School of Medicine seeks applied PhD or MS statisticians to collaborate with other statisticians and biomedical researchers. Proficiency in data analysis, writing statistical sections of grant applications and manuscripts, time management skills, and ability to communicate with biomedical researchers are essential. Please send CV, 3 references, and cover letter to Camie Derricott at [camie.derricott@hsc.utah.edu](mailto:camie.derricott@hsc.utah.edu). EOE.

## Washington

■ The Biostatistics and Biomathematics Program at Fred Hutchinson Cancer Research Center is recruiting a post-doctoral research fellow to develop statistical methods on measurement error, missing data, joint modeling of survival

## NORC at the UNIVERSITY OF CHICAGO

*Innovative solutions in research and technology*

NORC conducts high quality social science research in the public interest from its headquarters at the University of Chicago and from its offices in Chicago, IL, Washington, DC, Bethesda, MD, and Berkeley, CA.

We conduct research in economics, demographics, education and child development, health, substance abuse, mental health, justice, and survey quality both in the U.S. and internationally. We offer full-service survey design and operations as well as strengths in analysis, information technology, and technical assistance. NORC supports the research needs of government in the U.S. and abroad, international donor agencies, foundations, academic researchers, and private organizations.

NORC is actively seeking statisticians, survey methodologists, statistical programmers, data managers, survey directors, and social scientists with advanced training or experience in survey research or survey operations. New staff will be based in our Chicago, IL or Washington, DC offices. To learn more about NORC and to apply for employment, visit our website at:

<http://www.norc.org/careers>

NORC is an affirmative action, equal opportunity employer that values and actively seeks diversity in the workforce.

U.S. CENSUS BUREAU  
*Helping You Make Informed Decisions*

U.S. Department of Commerce,  
Economics and Statistics Administration,  
U.S. Census Bureau



and longitudinal data, and apply the new methods to real data examples. Applicants should have PhD or equivalent degree in biostatistics or statistics. Please apply online at <https://erecruit.fhcrc.org/Erecruit.htm>, and refer to position number SC-23731. The Fred Hutchinson Cancer Research Center and the Seattle Cancer Care Alliance are equal opportunity employers, committed to workforce diversity.

### International

■ The Memorial University of Newfoundland department of mathematics and statistics invites applications for a tenure-track assistant professor position in statistics. Visit [www.mun.ca/math/employment](http://www.mun.ca/math/employment) for details. Memorial University is committed to employment equity and encourages applications from qualified women and men, visible minorities, aboriginal people, and persons with disabilities. All qualified candidates are encouraged to apply; however, Canadian citizens and permanent residents will be given priority. ■



University of Connecticut  
Health Center

### Assistant Director of the Biostatistics Center

The Connecticut Institute for Clinical and Translational Science (CICATS) at the University of Connecticut Health Center (UCHC) invites nominations and applications for a full-time position as Assistant Director of the Biostatistics Center.

The Assistant Director will be a full-time faculty member at the School of Medicine in Farmington, CT with the potential for an appointment in the Department of Statistics at the UCONN Storrs Campus. The Assistant Director will assist the Director to develop the CICATS Biostatistics Center that will facilitate and support the proposed growth of Clinical and Translational Science across CICATS, which includes the university's Schools of Medicine and Dentistry, the Storrs campus, and local area hospitals. In addition to original research and research collaborations, the Assistant Director will be responsible for assisting with the operations of the CICATS Research Design, Epidemiology and Biostatistics cores. CICATS investigators will include trainees and both junior and senior faculty members from multiple disciplines. The Biostatistics faculty, in collaboration with a team of epidemiologists and master's level staff, will provide guidance to transdisciplinary teams for the development of clinical and translational research studies. He/she will also be responsible for biostatistics teaching in the new Master of Science in Clinical and Translational Research, with teaching opportunities available in other university health-related degree programs.

The successful candidate must hold a doctorate in biostatistics or a closely related discipline and have demonstrated success with self-initiated research, extramural funding and published scholarship and have the ability to work in collaboration with clinical, translational and/or basic scientists, and to lead a biostatistics academic unit including students, postdoctoral fellows, master-level staff, and other faculty.

Applicants should apply using the Health Center's applicant tracking system at <https://jobs.uchc.edu>, Search No. 2010-1076. A curriculum vitae and a cover letter should be uploaded through this site. Questions regarding this search should be addressed to James Grady DrPH, Director, CICATS Biostatistics Center, at [jgrady@uchc.edu](mailto:jgrady@uchc.edu).

UCHC is an Equal Opportunity Employer M/F/V/PwD

**SMITH  
HANLEY**  
an inVentiv health company

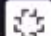
*Recruitment Specialists since 1980*

*Statistics  
Biostatistics  
Modeling  
Epidemiology*

Contract Staffing: Mishka Symonette 800-684-9921  
[msymonette@smithhanley.com](mailto:msymonette@smithhanley.com) [smithhanleyconsulting.com](http://smithhanleyconsulting.com)

Permanent Placement: Barbara Day 800-989-5627  
[bday@smithhanley.com](mailto:bday@smithhanley.com) [smithhanley.com](http://smithhanley.com)

**BRIDGING  
TALENT & OPPORTUNITY**

an inVentiv health  company



**a website geared toward  
young statistics professionals**



**STATtr@k offers tips on:**

- how to apply for a job
- how to be a successful graduate student
- how to make the transition from coursework to research

STATtr@k also offers information about career and mentorship sites, upcoming conferences, and awards and competitions. New articles will appear monthly.

**<http://stattrak.amstat.org>**



The Division of Mathematical Sciences <http://www.spms.ntu.edu.sg/mas> of the Nanyang Technological University (NTU), Singapore, is looking to add to its tenure-track faculty at all ranks. We encourage strong candidates in the areas of Applied Mathematics and Statistics, preferably with applications to Business or Financial Analytics, to apply.

NTU is a research university, with low teaching loads, excellent facilities, ample research funding and support for conference travel. The Division of Mathematical Sciences consists of active and talented faculty members working in a variety of areas. Its student body includes some of the best in the region. It offers undergraduate programs in mathematical sciences and mathematics & economics, and a graduate program awarding Masters and PhD degrees. Salary and benefits are competitive with the top universities around the world.

We seek people with excellent achievements in both research and teaching. Interested candidates are requested to send the following material to [MASrecruit@ntu.edu.sg](mailto:MASrecruit@ntu.edu.sg)

- Application Letter
- Curriculum Vitae
- Research Statement
- Teaching Statement
- Names of at least three referees

# AMSTATNEWS

## ADVERTISING DIRECTORY

Listed below are our display advertisements only. If you are looking for job-placement ads, please see the professional opportunities section. For more job listings or more information about advertising, please visit [www.amstat.org](http://www.amstat.org).

### **misc. products and services**

Colorado State University .....	p. 15
CRC Press .....	p. 8

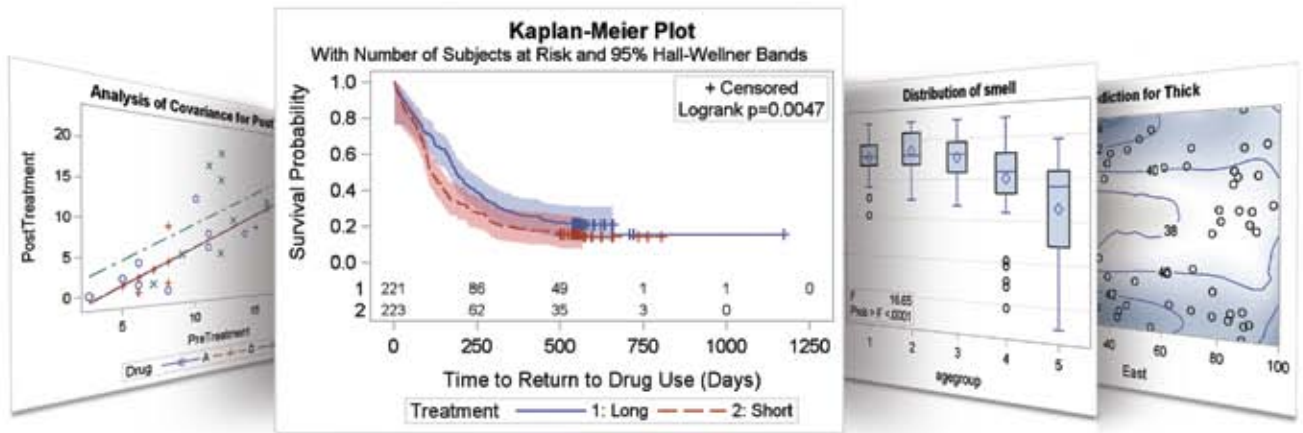
### **professional opportunities**

Capital One .....	p. 43
The Johns Hopkins University .....	p. 41
Nanyang Technological University .....	p. 47
NORC .....	p. 45
Smith Hanley .....	p. 46
Travelers Companies .....	p. 44
University of Connecticut Health Center .....	p. 46
U.S. Census Bureau .....	p. 45
Virginia Commonwealth University .....	p. 44
Westat .....	p. 43

### **software**

Cytel Inc. ....	p. 21
JMP, a business unit of SAS .....	cover 4
Minitab Inc. ....	centerfold
NCSS .....	p. 6
Salford Systems .....	p. 16
SAS .....	cover 3
Statistical Solutions .....	p. 13
StatSoft .....	cover 2
XLSTAT .....	p. 22





**What if you could produce hundreds of statistical graphics automatically?**

You can. With statistical graphics from SAS.

With ODS Statistical Graphics in SAS® 9.2 you get the right graphs for your analysis. And these graphs are created as automatically as tables. You can modify your plots programmatically or with a point and click editor.

**JMP® Statistical Discovery. From SAS.**

Exploratory Data Analysis | Design of Experiments | Business Visualization | Interactive Data Mining  
Visual Six Sigma | Modeling | Quality Improvement | Reliability | Statistics | Analytical Application Development



What if you could call on **multiple tools like SAS®, R and Excel** from one point-and-click environment?

You can. Personalize JMP® with add-ins that integrate your favorite analytic tools.

Developers can easily build and share custom applications, expanding the analytic horizons of all JMP users.

► [www.jmp.com/integrate](http://www.jmp.com/integrate)  
to see how you can  
personalize JMP



Available for  
Macintosh and Windows



THE  
POWER  
TO KNOW.